



PYRAMEX

Perform At Your Peak™



safety smart gear™

be seen - be safe - be smart™

Call for Discount Ordering

Phone: 877-999-4847

www.SafetySmartGear.com

2017 MASTER CATALOG

Everyone has a job to do.

The construction worker standing five floors high on scaffolding while the sun beats down on their neck. The manufacturer counting down the last minutes of a 12-hour workday. The oil rig worker starting their first day of a three-week shift.

Our accessible and swift customer service represents an understanding that we only grow when you can accomplish your work. Through consistent communication with our distributors, we're taking your needs and developing them into a personalized product line that allows you to perform at your peak.



PYRAMEX

Perform At Your Peak™



Why Pyramex?

A global market leader in innovation. With distribution in over 60 countries, Pyramex has become one of the world's leading providers of safety products by delivering innovative and stylish product lines, exceptional attention to customer service, and a mindset that we succeed when you succeed. Before a single Pyramex product leaves our plant, we listen to the needs and observations of our distributors and end users, invest countless hours in research, design, and testing, and work to make sure our products meet the highest industry safety standards. When you place a Pyramex product on your shelves, you can do so with confidence, knowing we stand behind everything we produce.

A mindset toward others. As a business owner, nothing is more important to you than the satisfaction and peace of mind of the people you serve – your customers. For more than 25 years, we have cultivated our environment with you and your business in mind. We have become an industry leader by doing things the right way, whether it's taking extra measures to manufacture an exceptional product or double-checking a rush order to a client on the other side of the world. If it's important to your business, it's important to ours.

A passion for excellence. We continually seek better methods of delivering product and service. We believe that every time we touch a customer's life, we should provide added value for that customer. Pursuing excellence means we must know our customers, understand their needs and expectations, regularly listen to them, and adjust our processes and procedures to more effectively serve them.

Serving others. We value what our customers can teach us. Once you become a Pyramex distributor, our customer service specialists work closely with you to understand your business goals and look for ways we can help you achieve them. Service to our customers comes first.

- No automated answering service – we answer your call directly, so that we can act immediately. Each customer has an assigned in-house rep to serve your business.
- Most orders ship the same day.
- Private labeling programs are available.
- We actively pursue opportunities to bring new business to you.

Superior products. Pyramex's products have long been recognized as a market leader when it comes to protection, style, comfort and innovation. Before we introduce a new product, we listen to our distributors and their customers.

- **Safety.** All of our products meet or exceed the highest industry safety standards and are independently tested.
- **Style.** The more stylish a personal protective product looks, the more likely it will be worn.
- **Comfort.** We design products that are maximized in comfort so that the user can wear it all day long.
- **Innovation.** We continually offer products that are unique to the marketplace to insure our customers have a competitive advantage and maintain healthy profit margins. Try on a Pyramex product and you will see and feel the difference.

New for 2017



H2MAX PAGE 7

With Pyramex's innovative H2MAX anti-fog coating, we've taken not only our lens technology to a new level, but your safety, too. You'll have maximum clarity to control your environment regardless of humidity or fogging. Our lenses are highly resistant to chemicals and abrasions — you'll see for yourself that the difference is clear.



EYEWEAR PAGE 14

For more than 25 years, Pyramex has led eyewear innovation around the world. We've coupled style and durability to provide you with frames that will rise to any given occasion. From the 16 gram Neshoba™ to the heavy-duty chemical resistant Isotope™, our eyewear is an ever-growing line meeting your ever-growing needs.



WELDING HELMETS PAGE 90

Every welder knows their work would be impossible without a sturdy helmet. But that helmet also has to be multi-functional and comfortable to wear for long hours. Our Leadhead® auto darkening helmets were created with that in mind. Supported by ultra-comfortable headgear, we've engineered helmets that will get you closer to the perfect bead.



WORK GLOVES
PAGE 108

Designed with your every need in mind, Pyramex is lending a helping hand with our new high-quality glove line. Whether you need ultra impact cut resistant gloves or those used for light duty material handling, we've got a variety of options that will help you accomplish any job.



HI-VIS WORK WEAR
PAGE 112

We're always re-envisioning our Hi-Vis work wear, striving to create the perfect fit. Our self-extinguishing vests will protect you from unexpected hazards, while our heavy-duty winter wear keeps you warm and focused. Adaptable to your work environment, the pocket placement helps you move from task to task without second-guessing if you have everything you need.



COOLING
PAGE 132

Heat exhaustion is a serious concern for the tireless worker. That's why we've expanded our cooling line to an array of options that includes a cooling vest, bandana, and neck shade. No matter how hot it gets, you can keep working and stay sharp.



TABLE OF CONTENTS

EYEWEAR14	Intruder Readers.....50	Trifecta®.....41	HEADGEAR78
Accurist®.....19	Ionix®.....30	TruLock®.....28	Adapters.....84
Achieva®.....30	Isotope™.....21	TruLock Multi-Colors.....28	Face Shields.....86
Alair®.....43	Itek®.....31	V2-Metal®.....46	Forestry Kits.....89
Avanté®.....27	Legacy®.....49	V2G®.....23	Hard Hats.....80
Azera™.....33	Mayan®.....45	V2G Readers.....50	Headlamp.....88
Capstone®.....53	Mini Intruder.....39	V2G-Plus®.....52	New Hire Kits.....89
Cortez®.....35	Mini Ztek.....40	V3G®.....22	
Defiant®.....45	Neshoba™.....25	V3G Rx.....22	WELDING90
Emerge®.....51	Onix®.....29	Venture II®.....32	
Emerge Plus.....51	Onix Plus.....29	Venture II Readers.....50	HEARING98
Endeavor® Plus.....31	OTS®.....44	Venture 3®.....35	
Ever-Lite®.....25	OTS XL.....44	XS3 Plus®.....22	GLOVES108
Exeter®.....43	Outlander®.....34	XSG®.....24	
Fastrac®.....47	Pacifica®.....49	XSG Kit.....24	HI-VIS WORK WEAR112
Flex-Zone™.....32	Pathfinder™.....46	XSG Readers.....50	
Fortress®.....49	PMXCEL®.....24	Zone®.....47	ERGONOMICS124
Forum®.....26	PMXSLIM®.....40	Zone II®.....48	
Furix®.....26	PMXTORQ®.....33	Ztek®.....40	COOLING132
Goggles.....56	PMXTREME®.....36	Ztek Readers.....50	
Goliath®.....34	PMXTREME LED.....37		BALACLAVA137
Gravex®.....27	PMXTREME LED Readers.....51	PREMIUM EYEWEAR58	
GT 2000®.....47	PMXTREME Readers.....50	Carhartt®.....66	RESPIRATORS136
Highlander™.....20	PMXTREME Rx.....36	Ducks Unlimited®.....70	
Highlander Plus.....20	Provoq®.....33	Venture Gear®.....58	
I-Force®.....18	Proximity®.....19	Venture Gear Tactical.....64	
I-Force Slim.....18	Readers.....50		
Integra®.....48	Reatta®.....46	Accessories.....72	
Intrepid II®.....43	Rendezvous®.....42	Displays.....75	
Intruder®.....38	Solara®.....41		
Intruder and Mini Intruder	Solo®.....45		
Multi-Colors.....39	Surveyor®.....41		

HOW TO ORDER

Pyramex products are available for sale through authorized distributors. Please contact us for a distributor near you.

Phone: 1-800-736-8673 | Fax: 1-877-PYRAMEX or 1-901-861-4967

Introducing **H2MAX** ANTI-FOG COATING

Pyramex Safety Products is proud to introduce the H2MAX anti-fog coating, available in select safety eyewear.

The innovative technology behind the H2MAX creates a high performing, superior anti-fog coating that is durable enough to withstand repeated cleaning without losing adhesion.

Not only does this premium treatment ensure maximum clarity in the most extreme temperature and humidity conditions, but it also adds a layer to the lens that is abrasion and chemical resistant.

The H2MAX anti-fog coating is made from non-hazardous environmental components and resists scratching from steel wool up to 100g weight.

H2MAX anti-fog coating passes ANSI Z87.1 standards, CE standards for N and K, and Canadian certification CAN/CSA Z94.3.



vimeo.com/pyramex/h2max

H2MAX anti-fog coating is available on select Pyramex Safety eyewear products.



Proximity[®]

Page 19



Isotope[®]

Page 21



V2G[®]

Page 23



Ever-Lite[®]

Page 25

We're a leading PPE provider for Construction

You'll face setbacks on every job site, but Pyramex's construction wear won't be one of them. We've designed each product with top-tier ingenuity, accommodating workers at every stage of a project. Be it our flame resistant Proximity® eyewear or our personalized Ridgeline® hard hats, these high-performance products are as tough as you are. Our new ultra impact gloves and extended cooling line are just two examples of Pyramex's ongoing mission: to serve you at every moment on the job.

Best sellers EYEWEAR

Accurist®	19
Ever-Lite®	25
Goliath®	34
Gravex®	27
Intruder®	38
Itek®	31
Pagosa®	61
PMXTREME®	36
Proximity®	19
Tensaw®	58
TruLock®	28
V2G®	23
Venture 3®	35
Ztek®	40

Best sellers HEADGEAR

Ridgeline® cap style	80
Ridgeline full brim	81

NEW! WELDING

Welding helmets	92
Welding goggles	94
IR safety eyewear	96

Best sellers HEARING

Cap mounted earmuffs	101
Disposable earplugs	102
PM8010 earmuffs	100

NEW! GLOVES

Material handling	110
Trade	110
Impact	110
Ultra impact	111
Cut resistant	111

Best sellers HI-VIS

Class 2 safety vests	114
Self-extinguishing safety vests	118
Class 3 jackets	120
Class 3 hoodies	121
Class 2 and Class 3 t-shirts	122
Non-rated safety vests	123
Knit caps	123

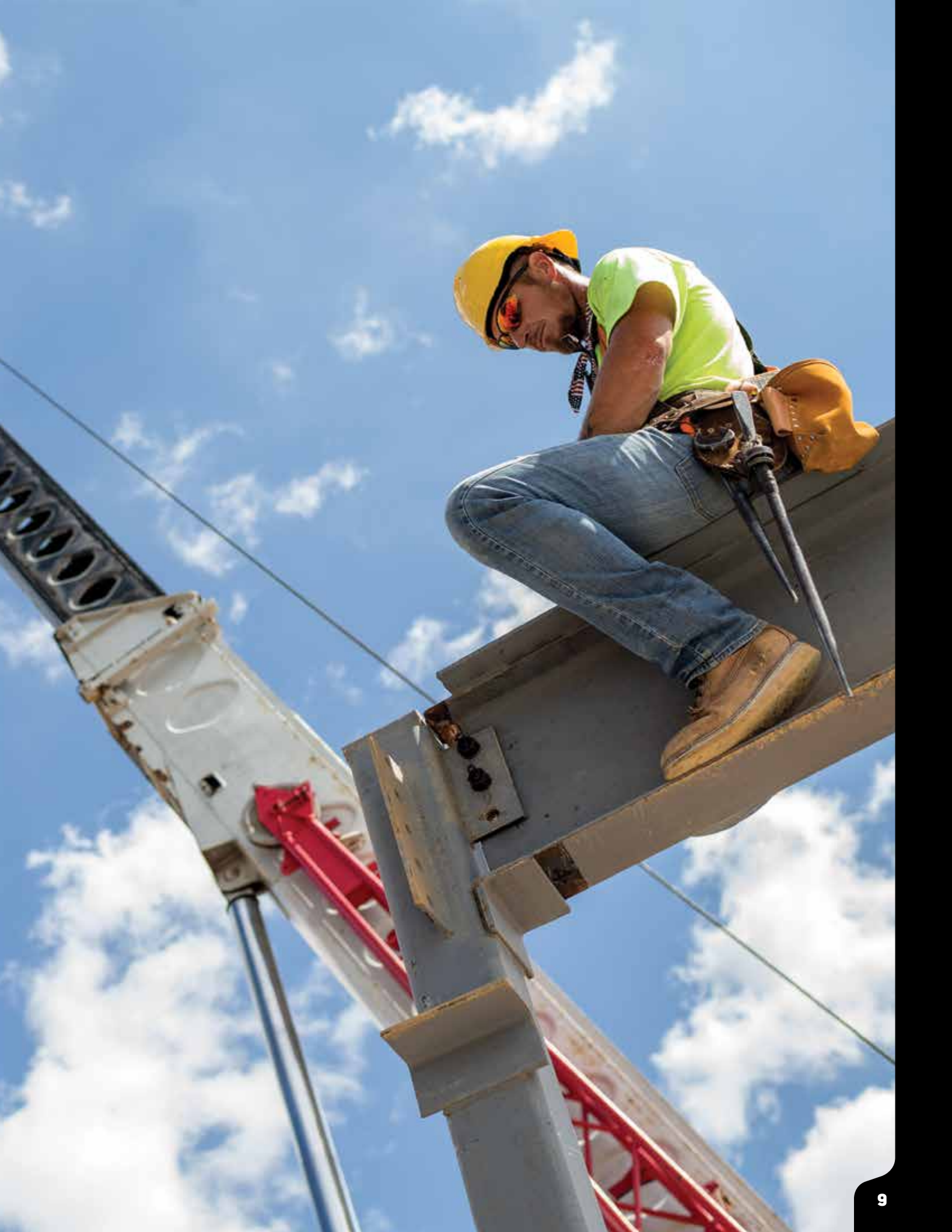
Best sellers ERGONOMICS

Back support	126
Wrist support	128
Elbow support	129
Knee support	130
Knee pads	131

NEW! COOLING

Assorted heat management products	134
-----------------------------------	-----





We're a leading PPE provider for Manufacturing

Twelve hours on your feet is easily made worse by rigid wear, which is why Pyramex's manufacturing line caters to those who are used to working overtime. Our newly formed baseball bump caps are made with a soft inner foam cushion that suits meter readers, food processors, and anyone else needing modest on site protection. We've created new uncorded earplugs, too, that are easier to push in and keep grime out — all while reducing noise that's all too common and unavoidable.

Best sellers EYEWEAR

Endeavor® Plus	31
Ever-Lite®	25
Intruder®	38
Isotope™	21
Itek®	31
OTS®	44
Provoq®	33
TruLock®	28
Venture II®	32
Venture II Readers	50
Venture 3®	35
Ztek®	40

Best sellers HEADGEAR

Ridgeline® cap style	80
Ridgeline full brim	81
Ridgeline bump caps	81
Baseball bump caps	83
Adapters	84
Face shields	85

NEW! WELDING

Welding helmets	92
Welding goggles	94
IR safety eyewear	96

Best sellers HEARING

Disposable earplugs	101
Metal detectable earplugs	101
Earmuffs	100
Banded earplugs	104

NEW! GLOVES

Material handling	110
Trade	110

Best sellers HI-VIS

Class 2 safety vests	114
Self-extinguishing safety vests	118
Class 3 jackets	120
Class 3 hoodies	121
Class 2 and Class 3 t-shirts	122
Non-rated safety vests	123
Knit caps	123

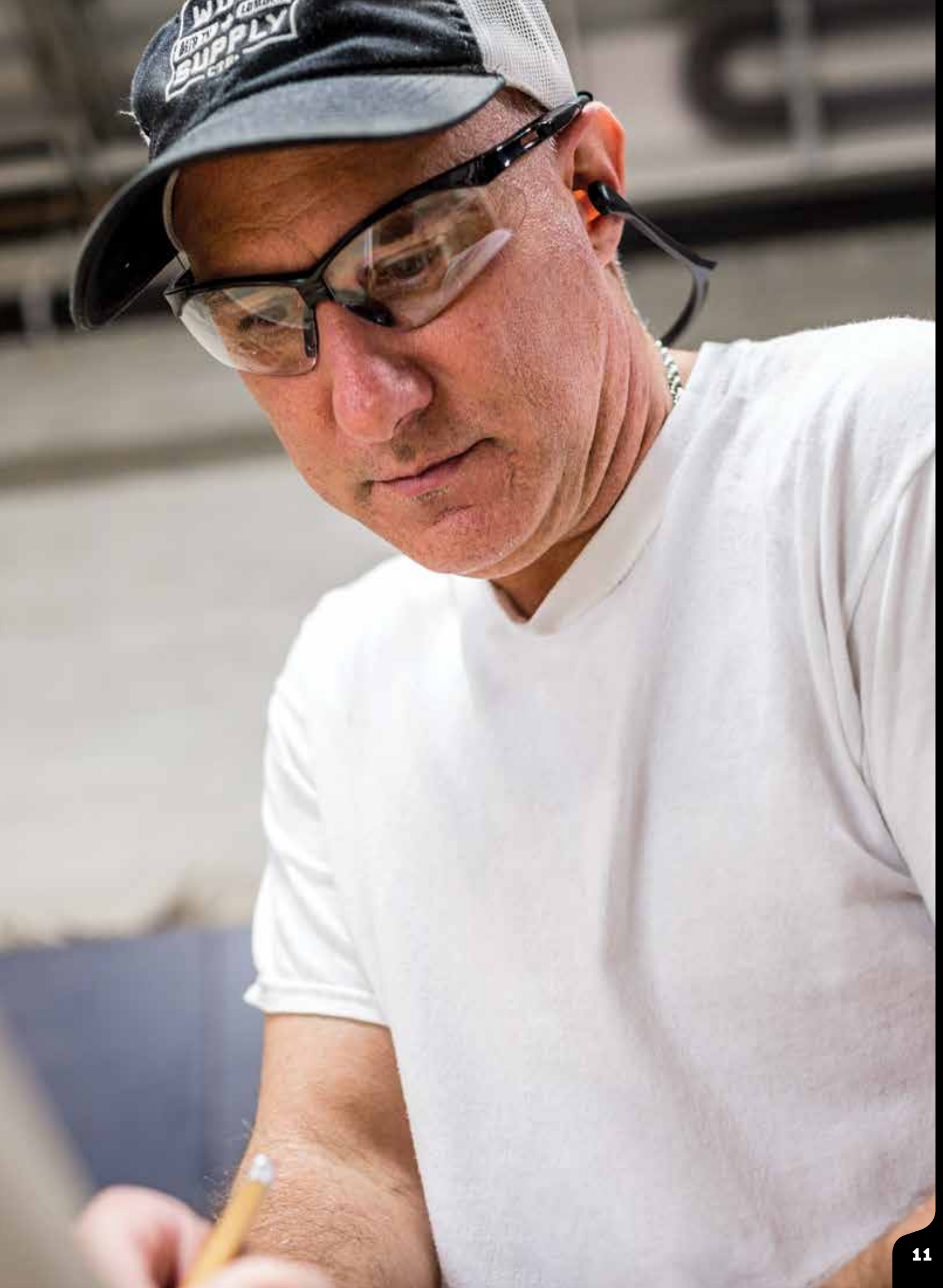
Best sellers ERGONOMICS

Back support	126
Wrist support	128
Elbow support	129
Knee support	130
Knee pads	131

NEW! COOLING

Assorted heat management products	134
-----------------------------------	-----





We're a leading PPE provider for Energy

Though the oil and gas industry has suffered over the last few years, Pyramex has bolstered our product line to improve your livelihood. We've developed self-extinguishing vests and cut resistant gloves that will protect you from the risks and abrasions of a highly demanding job.

Best sellers EYEWEAR

Capstone® Dual Lens	55
Capstone RL	54
Capstone Shield	53
Goliath®	34
Highlander™ Plus	20
I-Force® and I-Force Slim	18
Intrepid II®	43
Intruder®	38
Onix® and Onix Plus	29
OTS® and OTS XL	44
PMXSLIM®	40
PMXTREME®	36
Proximity®	19
Rendezvous®	42
V2G®	23
V2G-Plus®	52
V3G®	22
Venture II®	32
Ztek® and Mini Ztek	40

Best sellers HEADGEAR

Ridgeline® cap style	80
Ridgeline full brim	81
Adapters	84
Face shields	85

NEW! WELDING

Welding helmets	92
Welding goggles	94
IR safety eyewear	96

Best sellers HEARING

Cap mounted earmuffs	101
Disposable earplugs	102
PM8010 earmuffs	100
Banded earplugs	104

NEW! GLOVES

Ultra impact	111
Cut resistant	111

Best sellers HI-VIS

Class 2 safety vests	114
Self-extinguishing safety vests	118
Class 3 jackets	120
Class 3 hoodies	121
Class 2 and Class 3 t-shirts	122

NEW! COOLING

Assorted heat management products	134
-----------------------------------	-----







Eyewear features

Pyramex has an extensive line of eyewear for a variety of applications. Use the icons below to quickly find some of the most requested features for safety eyewear.



ADJUSTABLE NOSEPIECE



ADJUSTABLE TEMPLES



CO-INJECTED TEMPLES



DIELECTRIC



DUAL PANE LENS



FOAM PADDING



INCLUDES STRAP



LOCKING TEMPLE



MULTI LENSES



RATCHETING TEMPLES



RUBBER NOSEPIECE



RUBBER TIPS



VENTED FRAME



VENTED LENS



POLARIZED OPTION

Eyewear certifications

All Pyramex eyewear products have been independently tested for various standards and certifications.

Use the quick key (**ANSI** **CE** **CSA** **AUS** **BALLISTIC**) on the following pages to reference product models that meet these standards and certifications.

Use the dots (●●●●●) next to each part number to reference which options meet the standards and certifications.

ANSI	<ul style="list-style-type: none"> ANSI Z87.1+ High Impact
CE	<ul style="list-style-type: none"> CE EN166
CSA	<ul style="list-style-type: none"> Cert. Mod. - CAN/CSA Z94.3 -07 and -15
AUS	<ul style="list-style-type: none"> AS/NZS 1337
BALLISTIC	<ul style="list-style-type: none"> MIL-PRF-32432 High velocity Impact Standards



Lens Treatment Technology

H2MAX Anti-fog Coating:

The innovative technology behind the H2MAX creates a high performing, superior anti-fog coating that is durable enough to withstand repeated cleaning without losing adhesion. Not only does this premium treatment ensure maximum clarity in the most extreme temperature and humidity conditions, but it also adds a layer to the lens that is abrasion and chemical resistant. The H2MAX anti-fog coating is made from non-hazardous environmental components. Coating resists scratching from steel wool up to 100g weight. H2MAX passes ANSI Z87.1 standards, CE standards for N and K, and Canadian certification CAN/CSA Z94.3.

H2X Anti-fog Coating:

H2X provides anti-fog, anti-scratch, and anti-static protection. Even after repeated cleanings, H2X will continue to be effective because, the coating is bonded to the lenses. The H2X anti-fog coating is made from non-hazardous environmental components. Coating is waterproof with excellent scratch resistance. H2X passes ANSI Z87.1 standards and Canadian certification CAN/CSA Z94.3.

Polycarbonate Lenses:

All Pyramex safety eyewear utilize polycarbonate lenses. Polycarbonate lenses are up to 10 times more impact-resistant than plastic or glass lenses and provide 99% protection from the sun's harmful UV rays. They are lightweight and include a scratch-resistant coating to prevent surface scratches.

Lens Color Technology

Lens Color	Visible Light Transmitted 380 - 780nm	UVA, UVB Blocked 200 - 380nm	Blue Light Blocked 400 - 700nm	IR Blocked 780 - 2000nm
1.5 IR Filter commonly used for peripheral personnel who are not exposed to direct IR radiation	58%	100%	85%	83%
3.0 IR Filter commonly used around welding sites or for light brazing or cutting	12%	100%	97%	95%
5.0 IR Filter commonly used around welding sites or for medium to heavy cutting and medium to heavy gas welding	2%	100%	99%	99%
Arc blocks 75% of IR radiation ideal for use in welding areas designed for those who are not exposed to direct IR radiation	59%	99.9%	45%	76%
Amber commonly used in indoor, low light applications enhances contrast	89%	99.9%	75%	18%
Antique Mirror commonly used in outdoor applications gray polycarbonate lens with gold mirror coating reduces glare	23%	99.9%	84%	40%
Blue Mirror commonly used in outdoor applications gray polycarbonate lens with blue mirror coating reduces glare	23%	99.9%	77%	48%
Polarized Blue Mirror commonly used in outdoor applications contains a special filter that blocks intense reflected light, reducing glare and eye fatigue	7%	100%	93%	23%
Clear general purposes for indoor applications that require impact protection	92%	99.9%	9%	18%
Coffee commonly used in outdoor applications best for enhancing depth perception	15%	99.9%	96%	35%
Dark Gray commonly used in outdoor applications offers protection from excessive glare	7%	99%	93%	48%
Forest Gray commonly used in outdoor applications provides the least amount of color distortion	10%	100%	94%	65%
Polarized Forest Gray commonly used in outdoor applications provides the least amount of color distortion contains a special filter that blocks intense reflected light, reducing glare and eye fatigue	14%	100%	90%	38%
Gold Mirror commonly used in outdoor applications gray polycarbonate lens with gold mirror coating reduces glare	23%	99.9%	84%	40%
Gray commonly used in outdoor applications offers protection from excessive glare	23%	99.9%	74%	48%



Lens Color	Visible Light Transmitted 380 - 780nm	UVA, UVB Blocked 200 - 380nm	Blue Light Blocked 400 - 700nm	IR Blocked 780 - 2000nm
Polarized Gray commonly used in outdoor applications contains a special filter that blocks intense reflected light, reducing glare and eye fatigue	11%	100%	90%	18%
Green Mirror commonly used in outdoor applications gray polycarbonate lens with a double layer of silver and green mirror coatings reduces glare	10%	100%	93%	30%
Polarized Green Mirror commonly used in outdoor applications provides the least amount of color distortion contains a special filter that blocks intense reflected light, reducing glare and eye fatigue	10%	100%	93%	30%
Ice Blue Mirror commonly used in outdoor applications gray polycarbonate lens with a double layer of silver and blue mirror coatings reduces glare	13%	99.9%	95%	51%
Ice Orange Mirror commonly used in outdoor applications gray polycarbonate lens with a double layer of silver and orange mirror coatings reduces glare	10%	99.9%	90%	35%
I/O Mirror commonly used where it is required to move between indoor applications to outdoor applications clear polycarbonate lens with light gold mirror coating reduces glare	50%	100%	65%	39%
Infinity Blue commonly used in indoor applications where there is an excessive amount of yellow or sodium vapor light offers a high level of contrast	71%	99.9%	17%	18%
Light Gray commonly used in outdoor applications offers protection from excessive glare	52%	100%	50%	35%
Mango offers high contrast for low light applications	29%	100%	50%	0%
Multi-Color Mirror commonly used in outdoor applications gray polycarbonate lens with layers of silver and red, blue and green mirror coatings	23%	99.9%	84%	40%
Orange offers high contrast and low light image resolution	61%	99.9%	86%	18%
Photochromic commonly used where it is required to move between indoor applications to outdoor applications changes from clear to dark, after exposed to direct UV light – changes from dark to clear, after removed from UV light Transitions between 85% - 24%	82%	100%	20%	20%
Pink commonly used in low light and flat light conditions enhances definition and contrast	82%	99.9%	19%	20%
Purple Haze commonly used in medium to low light conditions enhances contrast	41%	99.9%	41%	25%
Sandstone Bronze commonly used in outdoor applications enhances contrast	23%	100%	87%	55%
Shooter's Amber commonly used in low light conditions offers high contrast with minimal strain on the eyes	29%	99.9%	96%	48%
Silver Mirror commonly used in outdoor applications gray polycarbonate lens with silver mirror coatings reduces glare	23%	99.9%	85%	59%
Sky Red Mirror commonly used in outdoor applications gray polycarbonate lens with a double layer of silver and red mirror coatings reduces glare	14%	99.9%	91%	64%
Polarized Sky Red Mirror commonly used in outdoor applications gray polycarbonate lens with a double layer of silver and red mirror coatings contains a special filter that blocks intense reflected light, reducing glare and eye fatigue	11%	100%	90%	40%
Smoke Green commonly used in outdoor applications provides the least amount of color distortion	10%	100%	94%	65%
Smoke Green Mirror commonly used in outdoor applications gray polycarbonate lens with smoke green mirror coating provides the least amount of color distortion	11%	100%	80%	50%
Sun Block Bronze commonly used in outdoor applications blocks the blue light of the spectrum offers brighter view on cloudy, hazy or foggy days	17%	100%	96%	50%
Vermilion commonly used for shooting sporting clays has a muting effect on green to bluish backgrounds enhances contrast while reducing all color equally for optimum color recognition	23%	100%	86%	48%

FOAM PADDED



Watch the video

vimeo.com/pyramex/i-force



Download a FREE QR Reader to your smartphone through your phone's app store
Scan the code

I-Force® and I-Force Slim

ANSI CE CSA AUS BALLISTIC



DUAL PANE LENS



FOAM PADDING



INCLUDES STRAP



VENTED FRAME

Dual pane lens

Outside lens is coated with anti-fog treatment

Quick release interchangeable temples and strap

Vented foam carriage

Passes MIL-PRF 32432 High Velocity Impact Standards



I-Force

Part No.	Black Frame
SB7010SDT ●●●●●	AF Clear Dual Pane H2X
SB7020SDT ●●●●●	AF Gray Dual Pane H2X
SB7030SDT ●●●●●	AF Amber Dual Pane H2X
SB7080SDT ●●●●●	AF I/O Mirror Dual Pane

I-Force Slim

Part No.	Black Frame
SB7010SDNT ●●●●●	AF Clear Dual Pane H2X
SB7020SDNT ●●●●●	AF Gray Dual Pane H2X
SB7080SDNT ●●●●●	AF I/O Mirror Dual Pane

I-Force Slim is about 6% smaller than the I-Force.



ANSI Z87.1 CE EN166 CSA Z94.3 AUS NSZ1337 BALLISTIC

All safety eyewear meets ANSI Z87.1+ standards (●) and provide 99% protection from harmful UV rays. All lenses are hard coated polycarbonate scratch-resistant unless otherwise noted. Some options meet European (EN166) (●), Canadian (CSA Z94.3) (●), Australian (AS/NZS 1337) (●) or Ballistic (MIL-PRF-32432) (●) standards. For specific lens options visit our website or contact your sales representative.

Proximity® ANSI CE CSA



Flame resistant foam padding

Ultra lightweight spectacle – 26.3gm

Slim co-injected temples

Part No.	Black Frame
SB9310ST ●●●	AF Clear H2X
SB9310STM ●●●	AF Clear H2MAX
SB9323ST ●●●	AF Dark Gray H2X
SB9323STM ●●●	AF Dark Gray H2MAX
SB9330ST ●●●	AF Amber H2X
SB9380ST ●●●	AF I/O Mirror

H2MAX

ANTI-FOG



vimeo.com/pyramex/h2max



Accurist® ANSI CSA



Built-in rubber nosepiece

Flame resistant inner foam padding



Part No.	Black Frame
SB8710DTP ●●●	AF Clear
SB8715DTP ●●●	AF Coffee
SB8720DTP ●●●	AF Gray
SB8725DTP ●●●	AF Light Gray
SB8770DP ●●●	Silver Mirror
SB8775DP ●●●	Blue Mirror
Part No.	Black and Red Frame
SBR8710DTP ●●●	AF Clear
SBR8720DTP ●●●	AF Gray
SBR8770DP ●●●	Silver Mirror

FOAM PADDED

Highlander™ ANSI CE

FOAM
PADDINGINCLUDES
STRAP

Soft foam carriage

Durable frame with detachable strap

Part No. **Black Frame**

SBB5010DT ••	AF	Clear H2X
SBB5020DT ••	AF	Gray H2X
SBB5055DT ••	AF	Sky Red Mirror
SBB5070DT ••	AF	Silver Mirror
SBB5080DT •	AF	I/O Mirror

Part No. **Black and Lime Frame**

SBL5010DT •	AF	Clear H2X
-------------	----	-----------

Part No. **Black and Red Frame**

SBR5010DT •	AF	Clear H2X
SBR5020DT •	AF	Gray H2X

Part No. **Black and Silver Frame**

SSB5020DT •	AF	Clear H2X
SSB5065DT •	AF	Ice Blue Mirror



Highlander Plus

ANSI CSA BALLISTIC

FOAM
PADDINGINCLUDES
STRAPVENTED
FRAME

Indirect vented foam carriage

Detachable strap

Passes MIL-PRF 32432 High Velocity
Impact Standards**Part No.** **Black Frame**

SBG5010DT •••	AF	Clear H2X
SBG5020DT •••	AF	Gray H2X
SBG5030DT •••	AF	Amber H2X
SBG5055DT •••	AF	Sky Red Mirror
SBG5080DT •••	AF	I/O Mirror



ANSI Z87.1

CE EN166

CSA Z94.3

BALLISTIC

All safety eyewear meets ANSI Z87.1+ standards (•) and provide 99% protection from harmful UV rays. All lenses are hard coated polycarbonate scratch-resistant unless otherwise noted. Some options meet European [EN166] (•), Canadian [CSA Z94.3] (•) or Ballistic [MIL-PRF-32432] (•) standards. For specific lens options visit our website or contact your sales representative.



vimeo.com/pyramex/h2max

Watch the video

vimeo.com/pyramex/isotope



Download a FREE QR Reader to your smartphone through your phone's app store
Scan the code

Isotope™ ANSI CE CSA



DIELECTRIC



RUBBER NOSEPIECE



INCLUDES STRAP



ADJUSTABLE TEMPLES

Dielectric

Interchangeable temples and neoprene strap

Temples adjust to three different lengths

Dual frame design features a rubber gasket

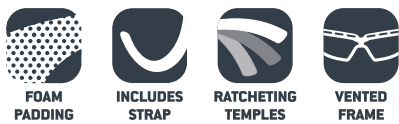
Passes D3: Droplet and Splash Test – provides protection from droplets and splashes

Part No.	Black Frame
GB9410STM ●●●	AF Clear H2MAX
GB9420STM ●●●	AF Gray H2MAX
GB9430STM ●●●	AF Amber H2MAX
GB9480ST ●●●	AF I/O Mirror



FOAM PADDED

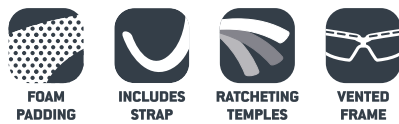
V3G® ANSI CE CSA AUS BALLISTIC



Vented lens and frame
 Interchangeable temples and headband included
 Headband and temples feature ratchet adjustment with quick fit retainer
 Flame resistant foam padding
 Passes MIL-PRF 32432 High Velocity Impact Standards

Part No.	Black Frame
GB8210ST ●●●●●	AF Clear H2X
GB8220ST ●●●●●	AF Gray H2X
GB8230ST ●●●●●	AF Amber H2X
GB8280ST ●●●●●	AF I/O Mirror

V3G Rx ANSI CE AUS BALLISTIC



The prescription models of the V3G have a larger lens to accommodate the RX8200 lens insert (sold separately)

Part No.	Black Frame
GB8210STRX ●●●●●	AF Clear H2X

V3G Rx Insert



Easily snaps securely into place above nosepiece
 Includes micro-fiber storage case
 Take insert to local optometrist for Rx lens installation

Part No.
RX8200

XS3® PLUS ANSI CSA AUS



Unique slim temple design with co-injection temple tips
 Soft foam padding

Part No.	Black Frame
SB4610STP ●●●	AF Clear H2X
SB4620STP ●●●	AF Gray H2X
SB4680STP ●●	AF I/O Mirror



ANSI Z87.1 CE EN166 CSA Z94.3 AUS NSZ1337 BALLISTIC

All safety eyewear meets ANSI Z87.1+ standards (●) and provide 99% protection from harmful UV rays. All lenses are hard coated polycarbonate scratch-resistant unless otherwise noted. Some options meet European (EN166) (●), Canadian (CSA Z94.3) (●), Australian (AS/NZS 1337) (●) or Ballistic (MIL-PRF-32432) (●) standards. For specific lens options visit our website or contact your sales representative.

V2G® ANSI CE CSA AUS BALLISTIC



FOAM
PADDING



INCLUDES
STRAP



RATCHETING
TEMPLES



VENTED
FRAME

Flame resistant foam padding

Vented lens and frame

Interchangeable temples and headband included

Headband and temples feature ratchet adjustment with quick fit retainer

Passes MIL-PRF 32432 High Velocity Impact Standards

Part No.	Black Frame
GB1810ST ●●●●●	AF Clear H2X
PYGB1810ST* ●●●●●	AF Clear H2X
GB1810STM ●●●●●	AF Clear H2MAX
GB1820ST ●●●●●	AF Gray H2X
GB1820STM ●●●●●	AF Gray H2MAX
GB1830ST ●●●●●	AF Amber H2X
GB1850SFT ●●●●●	AF 5.0 IR Filter H2X
GB1860SFT ●●●●●	AF 3.0 IR Filter H2X
GB1880ST ●●●●●	AF I/O Mirror

*Pyramex retail packaged product



vimeo.com/pyramex/h2max

V2G Rx Insert

Easily snaps securely into place above nosepiece

Includes micro-fiber storage case

Take insert to local optometrist for Rx lens installation



Part No.
RX1800



FOAM PADDED

XSG® ANSI CE CSA

FOAM
PADDINGINCLUDES
STRAP

Flame resistant foam padding

Strap has quick fit retainer

Interchangeable temples and strap included

Part No.	Black Frame
GB4010ST ●●●	AF Clear H2X
GB4020ST ●●●	AF Gray H2X
GB4030ST ●●●	AF Amber H2X
GB4080ST ●●●	AF I/O Mirror

PMXCEL® ANSI

FOAM
PADDINGINCLUDES
STRAPPOLARIZED
OPTION

Flame resistant inner foam padding

Detachable strap

Part No.	Black Frame
SB7310DT ●	AF Clear
SB7320DT ●	AF Gray
SB7321DT ●	AF Polarized Gray

XSG Kit

FOAM
PADDINGINCLUDES
STRAPMULTI
LENSES

ANSI CE BALLISTIC

Interchangeable lenses, temples, and strap

Black ballistic nylon case for storage

Passes MIL-PRF 32432 High Velocity
Impact Standards

Part No.	Black Frame
GB4010KIT ●●●	AF Clear H2X
	AF Gray H2X
	AF Amber H2X



ANSI Z87.1

CE EN166

CSA Z94.3

BALLISTIC

All safety eyewear meets ANSI Z87.1+ standards (●) and provide 99% protection from harmful UV rays. All lenses are hard coated polycarbonate scratch-resistant unless otherwise noted. Some options meet European [EN166] (●), Canadian [CSA Z94.3] (●) or Ballistic [MIL-PRF-32432] (●) standards. For specific lens options visit our website or contact your sales representative.

Ever-Lite® ANSI CE CSA



Soft nosepiece for snug fit

Semi-frame and slim co-injected temples

Lightweight spectacle – 22 gm



Part No.	Black Frame
SB8610D ●●●	Clear
SB8610DT ●●●	AF Clear H2X
SB8610DTM ●●●	AF Clear H2MAX
SB8620D ●●●	Gray
SB8620DT ●●●	AF Gray H2X
SB8620DTM ●●●	AF Gray H2MAX
SB8623D ●●●	Dark Gray
SB8623DT ●●●	AF Dark Gray H2X
SB8624D ●●●	Photochromatic
Photochromatic lens changes from clear to dark, after exposed to direct UV light. Changes from dark to clear, after removed from UV light.	
SB8630D ●●●	Amber
SB8660D ●●●	Infinity Blue
SB8660DT ●●●	AF Infinity Blue H2X
SB8665D ●●●	Ice Blue Mirror
SB8680D ●●●	I/O Mirror
SB8680DT ●●●	AF I/O Mirror



vimeo.com/pyramex/h2max

Neshoba™ ANSI CE

Frameless design with thin flexible temples

Ultra lightweight spectacle – 16 gm

Part No.	Black Temples
S9710S ●●●	Clear
S9710ST ●●●	AF Clear H2X
S9720S ●●●	Gray
S9720ST ●●●	AF Gray H2X
S9730S ●●●	Amber
S9780S ●●●	I/O Mirror





Furix® ANSI CE

Lightweight, contemporary frame
Straight back temples



Part No.	Black Frame	
SB8510DT ●●	AF	Clear
SB8515DT ●●	AF	Coffee
SB8520DT ●●	AF	Gray
SB8575DT ●●	AF	Blue Mirror
SB8580DT ●●	AF	I/O Mirror
Part No.	White Frame	
SW8520DT ●	AF	Gray
SW8575DT ●	AF	Blue Mirror

Forum® ANSI CE BALLISTIC



Soft, adjustable rubber nosepiece
Passes MIL-PRF 32432 High Velocity Impact Standards



Part No.	Black Frame	
SB6610D ●●●		Clear
SB6610DT ●●●	AF	Clear H2X
SB6620D ●●●		Gray
SB6670D ●●●		Silver Mirror
SB6680D ●●●		I/O Mirror

ANSI Z87.1 CE EN166 CSA Z94.3 BALLISTIC

All safety eyewear meets ANSI Z87.1+ standards (●) and provide 99% protection from harmful UV rays. All lenses are hard coated polycarbonate scratch-resistant unless otherwise noted. Some options meet European [EN166] (●), Canadian [CSA Z94.3] (●), or Ballistic [MIL-PRF-32432] (●) standards. For specific lens options visit our website or contact your sales representative.



Avanté® ANSI



VENTED FRAME



RUBBER NOSEPIECE

Straight back flexible temples

Vented frame

Built-in rubber nosepiece



Part No.	Black Frame
SB4510D •	Clear
SB4520D •	Gray
SB4530D •	Amber
SB4560D •	Infinity Blue
SB4570D •	Silver Mirror
SB4575D •	Blue Mirror
SB4580D •	I/O Mirror



Part No.	Black Frame with Cord
SB4510DP •	Clear
SB4520DP •	Gray



Part No.	Silver Frame with Cord
SS4545DP •	Ice Orange Mirror



Part No.	Gun Metal Frame
SGM4510D •	Clear
SGM4520D •	Gray



Part No.	Silver Frame
SS4510D •	Clear
SS4520D •	Gray
SS4545D •	Ice Orange Mirror
SS4580D •	I/O Mirror
SS4585D •	Ice Blue Mirror



Part No.	Silver and Black Frame
SSB4510D •	Clear
SSB4520D •	Gray
SSB4570D •	Silver Mirror

Gravex® ANSI CSA

Built-in nosepiece

Part No.	Black Frame
SB8910S ••	Clear
SB8910ST ••	AF Clear H2X
SB8920S ••	Gray
SB8980S ••	I/O Mirror





TruLock® ANSI CE CSA



Lightweight spectacle – 21 gm

Patented temple structure locks into place

Dielectric, metal-free structure with nylon temples

Watch the video

vimeo.com/pyramex/trulock



Download a FREE QR Reader to your smartphone through your phone's app store

Scan the code

Part No.	Black Temples
SB9510S ●●●	Clear
SB9510ST ●●●	AF Clear H2X
SB9520S ●●●	Gray
SB9520ST ●●●	AF Gray H2X
SB9530S ●●●	Amber
SB9556S ●●●	Multi-Color Mirror
SB9580S ●●●	I/O Mirror

TruLock Multi-Colors

ANSI CE CSA



Sold in dozen quantity only

Comes with six assorted temple colors: red, blue, green, purple, orange and black

Multi-pack includes two of each temple color with clear lenses

Perfect for schools or work areas where color coding is necessary

Provides a fun assortment of colors to brighten up any work environment

Part No.	Multi-Color Temples
S9510SMP ●●●	Clear



ANSI Z87.1 CE EN166 CSA Z94.3 AUS NSZ1337 BALLISTIC

All safety eyewear meets ANSI Z87.1+ standards (●) and provide 99% protection from harmful UV rays. All lenses are hard coated polycarbonate scratch-resistant unless otherwise noted. Some options meet European [EN166] (●), Canadian [CSA Z94.3] (●), Australian [AS/NZS 1337] (●) or Ballistic [MIL-PRF-32432] (●) standards. For specific lens options visit our website or contact your sales representative.



Onix® ANSI CE AUS BALLISTIC



CO-INJECTED TEMPLES



ADJUSTABLE NOSEPIECE



RATCHETING TEMPLES

Co-injected temples

Adjustable nosepiece

Ratcheting temples

Passes MIL-PRF 32432 High Velocity Impact Standards



Part No.	Black Frame
SB4910S ●●●	Clear
SB4910ST ●●●●●	AF Clear H2X
SB4920S ●●●●●	Gray
SB4980S ●●●●●	I/O Mirror



Part No.	Black and Pink Frame
SP4910S ●●●	Clear
PYSP4910S* ●●●●●	Clear

*Pyramex retail packaged product



Part No.	Black and Green Frame
SGR4910ST ●●●	AF Clear H2X

Onix Plus ANSI CE AUS



CO-INJECTED TEMPLES



ADJUSTABLE NOSEPIECE



RATCHETING TEMPLES

Adjustable nosepiece

Co-injected temples

Unique 3-angle adjustable flip lens

Flip the outer lens down for applications where tinted or IR lenses are needed



Part No.	Black Frame
SB4920STP ●●●	Clear with Gray H2X
SB4950STP ●●●●●	Clear with 5.0 IR H2X
SB4960STP ●●●●●	Clear with 3.0 IR H2X





Ionix®

ANSI CE CSA AUS BALLISTIC



Built-in rubber nosepiece
 Ventilated, straight-back flexible temples
 Passes MIL-PRF 32432 High Velocity Impact Standards

Part No.	Black Frame
SB8110D ●●●●●	Clear
SB8110DT ●●●●●	AF Clear
SB8116D ●●●●●	Sandstone Bronze
SB8120D ●●●●●	Gray
SB8120DT ●●●●●	AF Gray
SB8165D ●●●●●	Ice Blue Mirror
SB8170D ●●●●●	Silver Mirror

Achieva® ANSI



Brow guard
 Built-in rubber nosepiece
 Unique rubber temple tips



Part No.	Gray Temples Tips
SG6510S ●	Clear
SG6510ST ●	AF Clear H2X
SG6520S ●	Gray

Part No.	Pink Temples Tips
SP6510S ●	Clear

ANSI Z87.1 CE EN166 CSA Z94.3 AUS NSZ1337 BALLISTIC

All safety eyewear meets ANSI Z87.1+ standards (●) and provide 99% protection from harmful UV rays. All lenses are hard coated polycarbonate scratch-resistant unless otherwise noted. Some options meet European [EN166] (●), Canadian [CSA Z94.3] (●), Australian [AS/NZS 1337] (●) or Ballistic [MIL-PRF-32432] (●) standards. For specific lens options visit our website or contact your sales representative.



Endeavor® Plus **ANSI CSA**



RUBBER NOSEPIECE



DIELECTRIC



CO-INJECTED TEMPLES



ADJUSTABLE NOSEPIECE

Lightweight and durable protective eyewear

Built-in brow guard

Special dielectric hinge design

Curved, co-injected temples

One-piece wraparound lens

Soft and adjustable nosepiece



Part No.	Black and Gray Temples
SBG9610S ●●	Clear
SBG9610ST ●●	AF Clear H2X
SBG9620S ●●	Gray
SBG9620ST ●●	AF Gray H2X
SBG9630S ●●	Amber
SBG9680S ●●	I/O Mirror



Part No.	Black and Pink Temples
SBP9610S ●●	Clear



Part No.	Black and Green Temples
SBGR9610S ●●	Clear
SBGR9620S ●●	Gray
SBGR9680S ●●	I/O Mirror

Itek® **ANSI CE CSA AUS BALLISTIC**



RUBBER NOSEPIECE



CO-INJECTED TEMPLES

Soft integrated nosepiece

Soft co-injected rubber temple tips

Lens provides excellent side protection

Passes MIL-PRF 32432 High Velocity Impact Standards



Part No.	Lens and Temples
S5810S ●●●●	Clear
S5810ST ●●●●	AF Clear H2X
S5820S ●●●●	Gray
S5820ST ●●●●	AF Gray H2X
S5830S ●●●●	Amber
S5860S ●●●●	Infinity Blue
S5870S ●●●●	Silver Mirror
S5875S ●●●●	Blue Mirror
S5880S ●●●●	I/O Mirror

Venture II® ANSI CE CSA BALLISTIC



RUBBER NOSEPIECE



ADJUSTABLE TEMPLES

Temples adjust to four different lengths
 Nosepiece secures the glass and prevents slipping
 Passes MIL-PRF 32432 High Velocity Impact Standards



Part No.	Black Frame
SB1810S ●●●●	Clear
SB1810ST ●●●●	AF Clear H2X
SB1820S ●●●●	Gray
SB1820ST ●●●●	AF Gray H2X
SB1830S ●●●●	Amber
SB1835S ●●●●	Sun Block Bronze
SB1840S ●●●●	Orange
SB1850SF ●●●●	5.0 IR Filter
SB1860S ●●●●	Infinity Blue
SB1860SF ●●●●	3.0 IR Filter
SB1870S ●●●●	Silver Mirror
SB1875S ●●●●	Blue Mirror
SB1880S ●●●●	I/O Mirror
SB1880ST ●●●●	AF I/O Mirror
SB1890S ●●●●	Gold Mirror

Part No.	Realtree Hardwoods HD® Frame
SH1810S ●●●●	Clear
SH1820S ●●●●	Gray
SH1830S ●●●●	Amber

Part No.	Metallic Blue Frame
SMB1810S ●●●●	Clear
SMB1820S ●●●●	Gray
SMB1880S ●●●●	I/O Mirror



Part No.	Maroon Frame
SMM1810S ●●●●	Clear

Part No.	Slate Gray Frame
SSG1810S ●●●●	Clear

Flex-Zone™ ANSI CE CSA



CO-INJECTED TEMPLES



ADJUSTABLE NOSEPIECE



MULTI LENSES

Durable, flexible nylon frame and straight-back temples with patented structure for lens replacement

Ventilated nosepiece is soft and adjustable

Part No.	Black Frame
SB9210ST ●●●●	AF Clear H2X
R9210S ●●●●	Clear Replacement
SB9220ST ●●●●	AF Gray H2X
R9220S ●●●●	Gray Replacement
SB9230S ●●●●	Amber
SB9280S ●●●●	I/O Mirror
SB92REPL ●●●●	Clear, PLUS Gray Replacement



ANSI Z87.1 CE EN166 CSA Z94.3 BALLISTIC

All safety eyewear meets ANSI Z87.1+ standards (●) and provide 99% protection from harmful UV rays. All lenses are hard coated polycarbonate scratch-resistant unless otherwise noted. Some options meet European [EN166] (●), Canadian [CSA Z94.3] (●) or Ballistic [MIL-PRF-32432] (●) standards. For specific lens options visit our website or contact your sales representative.



Azera™ ANSI



Straight back temples

Built-in rubber flange nosepiece

Part No.	Black Frame
SB4410D •	Clear
SB4420D •	Gray
SB4430D •	Amber

PMXTORQ® ANSI



Wide, straight back temples

Ventilated nosepiece

Part No.	Black Frame
SB6910D •	Clear
SB6920D •	Gray

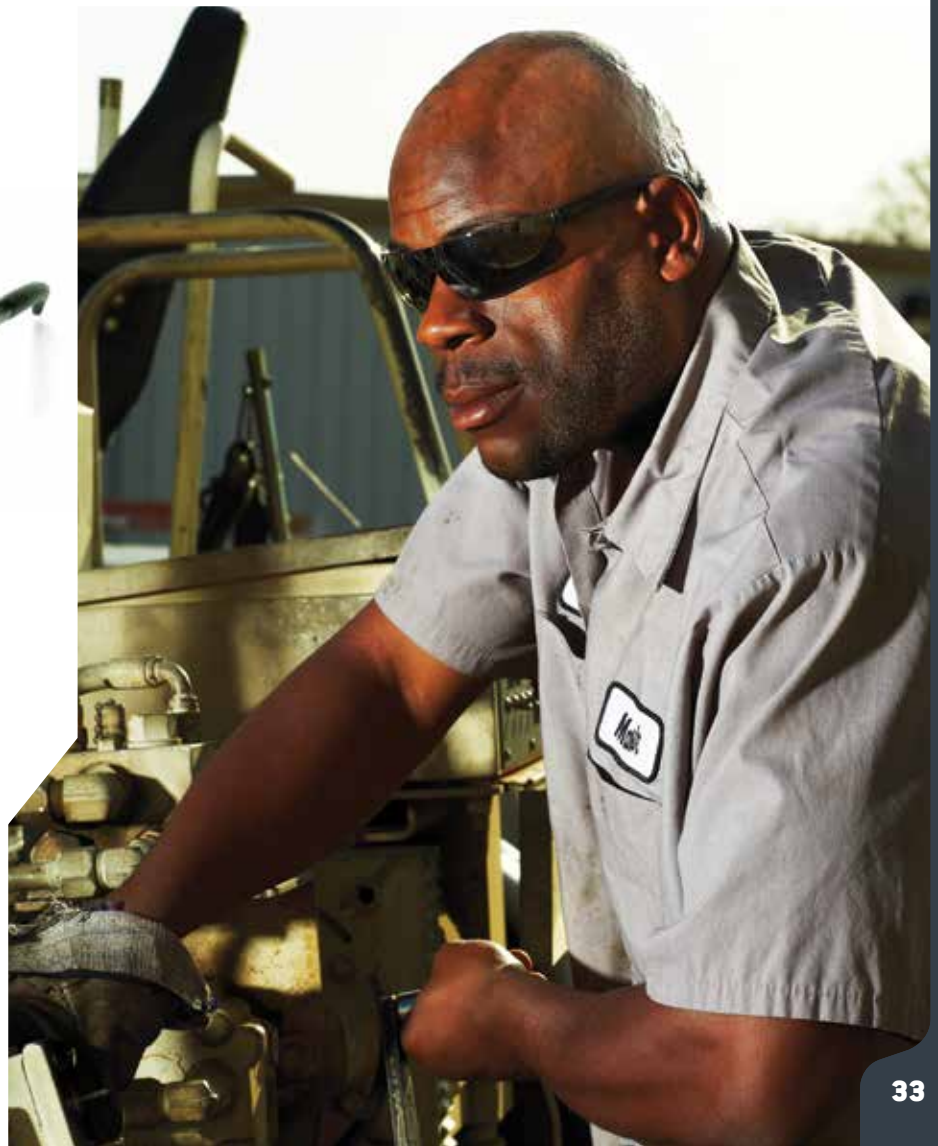
Provoq® ANSI CSA



Soft nosepiece

Rubber temples

Part No.	Lens and Temples
S7210S ••	Clear
S7210ST ••	AF Clear
S7220S ••	Gray
S7220ST ••	AF Gray
S7230S ••	Amber
S7240S •	Orange
S7255S •	Multi-Color Mirror
S7260S •	Infinity Blue
S7270S ••	Silver Mirror
S7275S ••	Blue Mirror
S7280S ••	I/O Mirror
S7280ST •	AF I/O Mirror





Goliath® ANSI CE CSA AUS



CO-INJECTED TEMPLES



POLARIZED OPTION

Co-injected, rubber temples



Part No.	Black Frame
SB5610D ●●●●	Clear
SB5610DT ●●●●	AF Clear H2X
SB5620D ●●●●	Gray
SB5620DT ●●●●	AF Gray H2X
SB5621D ●●●●	Polarized Gray
SB5645D ●●●●	Ice Orange Mirror
SB5665D ●●●●	Ice Blue Mirror
SB5670D ●●●●	Silver Mirror
SB5680D ●●●●	I/O Mirror
Part No.	White Frame
SW5620D ●●●●	Gray
SW5655D ●●●●	Sky Red Mirror
SW5665D ●●●●	Ice Blue Mirror

Outlander® ANSI



RUBBER NOSEPIECE

Dual lens style with wide temples

Soft nosepiece



Part No.	Black Frame
SB8010D ●	Clear
SB8020D ●	Gray
SB8065D ●	Ice Blue Mirror
SB8070D ●	Silver Mirror
SB8080DT ●	AF I/O Mirror



Part No.	Caramel Mixed Frame
SCM8018D ●	Sandstone Bronze



Part No.	Nickel Frame
SNK8020D ●	Gray

ANSI Z87.1 CE EN166 CSA Z94.3 AUS NSZ1337 BALLISTIC

All safety eyewear meets ANSI Z87.1+ standards (●) and provide 99% protection from harmful UV rays. All lenses are hard coated polycarbonate scratch-resistant unless otherwise noted. Some options meet European [EN166] (●), Canadian [CSA Z94.3] (●), Australian [AS/NZS 1337] (●) or Ballistic [MIL-PRF-32432] (●) standards. For specific lens options visit our website or contact your sales representative.

Venture 3®

ANSI CE CSA AUS BALLISTIC



VENTED FRAME



ADJUSTABLE NOSEPIECE



CO-INJECTED TEMPLES

Soft, adjustable ventilated nosepiece

Ventilated frame

Soft, adjustable co-injected rubber temples

Passes MIL-PRF 32432 High Velocity Impact Standards



Part No.	Black Frame
SB5710D ●●●●	Clear
PYSB5710D* ●●●●	Clear
SB5710DT ●●●●	AF Clear H2X
SB5720D ●●●●	Gray
SB5720DT ●●●●	AF Gray H2X

Part No.	Black Frame
SB5730D ●●●●	Amber
PYSB5730D* ●●●●	Amber
SB5750SFT ●●	AF 5.0 IR Filter H2X
SB5760D ●●●●	Infinity Blue
SB5760SFT ●●	AF 3.0 IR Filter H2X

Part No.	Black Frame
SB5770D ●●●●	Silver Mirror
SB5780D ●●●●	I/O Mirror

*Pyramex retail packaged product

Cortez® ANSI CE



CO-INJECTED TEMPLES



RUBBER NOSEPIECE

Durable co-injected temples

Ribbed cushioned nosepiece



Part No.	Apple Temples
SA3610S ●	Clear

Part No.	Orange Temples
S03610S ●	Clear
S03620S ●	Gray



Part No.	Gray Temples
SG3610S ●	Clear
SG3620S ●	Gray

Part No.	Navy Temples
SN3610S ●	Clear
SN3660S ●	Infinity Blue

Part No.	Black Temples
SB3610S ●●	Clear
SB3610ST ●●	AF Clear H2X
SB3620S ●●	Gray
SB3680S ●●	I/O Mirror

PMXTREME® ANSI



RUBBER NOSEPIECE



INCLUDES STRAP



RUBBER TIPS

Built-in rubber nosepiece

Ventilated, straight-back flexible temples with rubber temple tips

Includes black lanyard cord

Part No.	Black Frame with Cord
SB6310SP •	Clear
SB6310STP •	AF Clear
SB6320SP •	Gray
SB6320STP •	AF Gray
SB6330SP •	Amber
SB6345SP •	Ice Orange Mirror
SB6360SP •	Infinity Blue
SB6370SP •	Silver Mirror
SB6375SP •	Blue Mirror
SB6376SP •	Smoke Green Mirror
SB6380SP •	I/O Mirror

Part No.	Camo Frame with Cord
SCM6310STP •	AF Clear
SCM6318STP •	AF Sandstone Bronze
SCM6320STP •	AF Gray

Part No.	Red Frame with Cord
SR6320SP •	Gray



PMXTREME Rx ANSI



RUBBER NOSEPIECE



RUBBER TIPS

Includes RX insert which, accommodates -3.0 to +3.0 prescription lenses

Take insert to local optometrist for Rx lens installation

Part No.	Black Frame
SB6310STRX •	AF Clear
SB6320STRX •	AF Gray



ANSI Z87.1

All safety eyewear meets ANSI Z87.1+ standards (●) and provide 99% protection from harmful UV rays. All lenses are hard coated polycarbonate scratch-resistant unless otherwise noted. For specific lens options visit our website or contact your sales representative.



PMXTREME® LED ANSI



The super bright swiveling LED bulbs (3 lumens per side) help you to see in dark places while keeping your hands free to do other task

Built-in rubber nosepiece and rubber temples tips

The alkaline batteries provides up to 50 hours of use before replacing. Three L44 alkaline batteries per temples (six total) are included

Easy to use push button on/off switches are located at the top of each temple

Part No. Black Frame

SB6310SLED •	Clear
PYSB6310SLED* •	Clear
SB6310STLED •	AF Clear

*Pyramex retail packaged product





Intruder® ANSI CE CSA AUS

Integrated nosepiece
Lightweight, frameless protection



Part No.	Lens and Temples	
S4110S ●●●●		Clear
PYS4110S* ●●		Clear
S4110ST ●●●●	AF	Clear
S4110SUC ●		Uncoated Clear
S4120S ●●●●		Gray
PYS4120S* ●●		Gray
S4120ST ●●	AF	Gray
S4130S ●●●●		Amber
PYS4130S* ●●		Amber
S4160S ●●		Infinity Blue
S4170S ●●		Silver Mirror
S4175S ●		Blue Mirror
S4180S ●●●●		I/O Mirror
S4180ST ●	AF	I/O Mirror

*Pyramex retail packaged product



Part No. **Black Temples**
SB4110S ●● Clear



Part No. **Blue Temples**
SN4110S ●● Clear



Part No. **Red Temples**
SR4110S ●● Clear



Part No.	Full Foam Padded Frame	
S4110STFP ●	AF	Clear
S4120STFP ●	AF	Gray
S4180STFP ●	AF	I/O Mirror

ANSI Z87.1 CE EN166 CSA Z94.3 AUS NSZ1337

All safety eyewear meets ANSI Z87.1+ standards (●) and provide 99% protection from harmful UV rays. All lenses are hard coated polycarbonate scratch-resistant unless otherwise noted. Some options meet European [EN166] (●), Canadian [CSA Z94.3] (●) or Australian [AS/NZS 1337] (●) standards. For specific lens options visit our website or contact your sales representative.



Mini Intruder® **ANSI AUS**

Mini Intruder has all the great features of Intruder in a design better suited for smaller facial size

Part No.	Lens and Temples
S4110SN ●●	Clear
S4110SNT ●	AF Clear
S4120SN ●	Gray
S4180SN ●	I/O Mirror



Intruder and Mini Intruder Multi-Colors **ANSI CSA**

Sold in dozen quantity only

Comes with six assorted temple colors: red, blue, green, purple, orange and black

Multi-pack includes two of each temple color with clear lenses

Perfect for schools or work areas where color coding is necessary

Provides a fun assortment of colors to brighten up any work environment

Part No.	Multi-Color Temples
S4110SMP ●●	Clear (Intruder)
S4110SNMP ●	Clear (Mini Intruder)



Ztek® ANSI CE CSA



RUBBER TIPS

Integrated nosepiece

Soft, non-slip rubber temple tips provide non-binding fit



Part No.	Lens and Temples
S2510S ●●●	Clear
S2510ST ●●●	AF Clear H2X
S2514S ●●●	1.5 IR Filter
S2514S are designed for peripheral personnel and visitors who are NOT exposed to direct IR radiation.	
S2515S ●●●	Coffee
S2520S ●●●	Gray
S2520ST ●●●	AF Gray H2X
S2530S ●●●	Amber
S2540S ●●●	Orange
S2550SF ●●●	5.0 IR Filter

Part No.	Lens and Temples
S2560S ●●●	Infinity Blue
S2560SF ●●●	3.0 IR Filter
S2560ST ●●●	AF Infinity Blue H2X
S2565S ●●●	Purple Haze
S2570S ●●●	Silver Mirror
S2575S ●●●	Blue Mirror
S2580S ●●●	I/O Mirror
S2590S ●●●	Gold Mirror
S25ARCS ●●●	Arc

S25ARCS are great for use under the welding helmet – allows welder to see his work clearly without suffering “welders flash burn” from surrounding welders.

Mini Ztek ANSI CE CSA



RUBBER TIPS

Mini Ztek has all the great features of Ztek in a design better suited for slimmer facial sizes



Part No.	Lens and Temples
S2510SN ●●●	Clear
S2510SNT ●●●	AF Clear H2X
S2517SN ●●●	Pink
S2520SN ●●●	Gray
S2530SN ●●●	Amber
S2560SN ●●●	Infinity Blue
S2575SN ●●●	Blue Mirror
S2580SN ●●●	I/O Mirror

PMXSLIM® ANSI CE AUS



ADJUSTABLE NOSEPIECE



CO-INJECTED TEMPLES

Slim fit for smaller facial features

Soft, adjustable nosepiece

Co-injected temple design includes soft rubber tips for a non-slip fit

Part No.	Black Temples
SB7110S ●●●	Clear
SB7110ST ●●●	AF Clear H2X
SB7120S ●●●	Gray
SB7120ST ●●●	AF Gray H2X
SB7138S ●●●	Sandstone Bronze
SB7180S ●●●	I/O Mirror



ANSI Z87.1 CE EN166 CSA Z94.3 AUS NSZ1337

All safety eyewear meets ANSI Z87.1+ standards (●) and provide 99% protection from harmful UV rays. All lenses are hard coated polycarbonate scratch-resistant unless otherwise noted. Some options meet European [EN166] (●), Canadian [CSA Z94.3] (●) or Australian [AS/NZS 1337] (●) standards. For specific lens options visit our website or contact your sales representative.



Solara® ANSI



RUBBER NOSEPIECE



CO-INJECTED TEMPLES

Straight back temples with rubber insert

Built-in nosepiece

Extended lens



Part No.	Black Frame
SB4310D •	Clear
SB4320D •	Gray
SB4360D •	Infinity Blue
SB4375D •	Blue Mirror
SB4380D •	I/O Mirror
Part No.	Translucent Gray Frame
STG4310D •	Clear
STG4320D •	Gray
STG4370D •	Silver Mirror

Surveyor® ANSI



RUBBER NOSEPIECE



CO-INJECTED TEMPLES

Comfort-fit, rubber temples

Soft nosepiece



Part No.	Black Frame
SB6110ST •	AF Clear
SB6120S •	Gray
SB6145S •	Ice Orange Mirror
SB6170S •	Silver Mirror

Trifecta® ANSI

Wrap-around punched steel lens

Provides excellent eye protection for work environments with high humidity and flying particles

This product meets only high impact requirements

Part No.	Black Frame
SB76WMD •	Black Punched Steel





Rendezvous® ANSI CE BALLISTIC



ADJUSTABLE NOSEPIECE



ADJUSTABLE TEMPLES



RATCHETING TEMPLES

Adjustable nosepiece

Temples adjust to four different lengths

Align lens angle to proper position for work application with ratcheting lens pitch adjustment

Passes MIL-PRF 32432 High Velocity Impact Standards



Part No.	Black Frame
SB2810S ●●●	Clear
SB2810ST ●●●	AF Clear H2X
SB2815S ●●●	Coffee
SB2820S ●●●	Gray
SB2820ST ●●●	AF Gray H2X
SB2830S ●●●	Amber
SB2840S ●●●	Orange
SB2860S ●●●	Infinity Blue
SB2860ST ●●●	AF Infinity Blue H2X
SB2870S ●●●	Silver Mirror
SB2875S ●●●	Blue Mirror
SB2880S ●●●	I/O Mirror

Part No.	Clear Frame
SCC2810S ●●●	Clear
SCC2810ST ●●●	AF Clear H2X

Part No.	Gray Frame
SCG2810ST ●●●	AF Clear H2X



Part No.	Blue Frame
SCB2810S ●●●	Clear

ANSI Z87.1 CE EN166 CSA Z94.3 AUS NSZ1337 BALLISTIC

All safety eyewear meets ANSI Z87.1+ standards (●) and provide 99% protection from harmful UV rays. All lenses are hard coated polycarbonate scratch-resistant unless otherwise noted. Some options meet European [EN166] (●), Canadian [CSA Z94.3] (●), Australian [AS/NZS 1337] (●) or Ballistic [MIL-PRF-32432] (●) standards. For specific lens options visit our website or contact your sales representative.



Alair® ANSI CE

Straight temples
Integrated nosepiece



Part No.	Lens and Temples
S3210S ●●	Clear
S3210ST ●●	AF Clear H2X
S3220S ●●	Gray
S3260S ●●	Infinity Blue
S3270S ●●	Silver Mirror
S3275S ●●	Blue Mirror
S3280S ●●	I/O Mirror

Exeter® ANSI CE AUS



Built-in rubber nosepiece
Co-injected, rubber temples

Part No.	Glossy Black Frame
SB5110DT ●●	AF Clear H2X
SB5120DT ●●●	AF Gray H2X
SB5133DT ●●	AF Shooter's Amber H2X
SB5155DT ●●●	AF Sky Red Mirror
SB5170DT ●●●	AF Silver Mirror
SB5175DT ●●●	AF Blue Mirror
SB5180DT ●●	AF I/O Mirror
Part No.	Charcoal Gray Frame
SCG5165DT ●●	AF Ice Blue Mirror

Intrepid II® ANSI CE CSA BALLISTIC



Thin, soft flange of the extra wide nosepiece distributes weight of the glass evenly across the bridge, eliminating pressure on the nose

Flexible rubber temples provide pressure-free fit behind the ear

Ultra-light design ideal for all-day versatility

Passes MIL-PRF 32432 High Velocity Impact Standards

Part No.	Black and Gray Temples
SB8810S ●●●●	Clear
PYSB8810S* ●●●●	Clear
SB8820S ●●●●	Gray
PYSB8826S* ●●●●	Smoke Green
PYSB8827S* ●●●●	Vermilion
SB8830S ●●●●	Amber
SB8835S ●●●●	Sun Block Bronze
SB8880S ●●●●	I/O Mirror

*Pyramex retail packaged product





OTS® ANSI CE CSA AUS



RATCHETING
TEMPLES



ADJUSTABLE
TEMPLES



Designed to better fit today's prescription eyewear

Lightweight nylon temples adjust for length and pitch

Part No.	Black Temples
S3510SJ ●●●	Clear
S3510STJ ●●●●	AF Clear H2X
S3520SJ ●●●	Gray
S3530SJ ●●●	Amber
S3550SFJ ●	5.0 IR Filter
S3560SFJ ●	3.0 IR Filter
S3580SJ ●●●	I/O Mirror

OTS XL ANSI CE CSA



RATCHETING
TEMPLES



ADJUSTABLE
TEMPLES



OTS XL has all the great features of OTS in a larger design

Part No.	Black Temples
S7510SJ ●●●	Clear
S7510STJ ●●●●	AF Clear H2X
S7520SJ ●●●	Gray
S7580SJ ●●●	I/O Mirror



OTS: Fits over frames up to:
5 3/8" W x 1 3/4" H | 137mm x 44mm



OTS XL: Fits over frames up to:
5 15/16" W x 1 15/16" H | 151mm x 49mm

ANSI Z87.1 CE EN166 CSA Z94.3 AUS NSZ1337

All safety eyewear meets ANSI Z87.1+ standards (●) and provide 99% protection from harmful UV rays. All lenses are hard coated polycarbonate scratch-resistant unless otherwise noted. Some options meet European [EN166] (●), Canadian [CSA Z94.3] (●) or Australian [AS/NZS 1337] (●) standards. For specific lens options visit our website or contact your sales representative.



Solo® ANSI CE CSA

Uncoated lenses

Temples are vented to reduce fogging

Part No.	Lens and Temples
S510S ●●●	Clear
PYS510S* ●●	Clear
S510SD** ●	Clear
S510SJ*** ●	Clear
S520S ●	Gray

*Pyramex retail packaged product

**Dispenser pack – 12 per box

***Jumbo size for use over prescription spectacles



Defiant® ANSI CE



RATCHETING TEMPLES



ADJUSTABLE TEMPLES

Tilt type adjustment allows optimum visibility

Temples adjust to four settings

Part No.	Black Temples
SB1010S ●	Clear
SB1010SJ*** ●●	Clear

***Jumbo size for use over prescription spectacles



Mayan® ANSI CE



RATCHETING TEMPLES

Integrated nosepiece

Sleek in-line ratchet adjustable temples

Part No.	Black Frame
SB2610D ●●	Clear
SB2620D ●●	Gray



Reatta® ANSIRUBBER
NOSEPIECEVENTED
LENS

Adjustable nosepiece

Straight back flexible temples

Vented lens allows air flow to prevent fogging

Part No.	Charcoal Frame
SCH4810D •	Clear
SCH4810DT •	AF Clear H2X
SCH4820D •	Gray
Part No.	Charcoal and Blue Frame
SNC4810D •	Clear
SNC4820D •	Gray
SNC4880D •	I/O Mirror

**V2-Metal®** ANSI CE CSARUBBER
NOSEPIECE

Spring loaded temples make this eyewear easy to position

Contemporary metal frame and temples fit all facial sizes

Part No.	Gun Metal Frame
SGM1810S •••	Clear
SGM1820S •••	Gray
SGM1860S •••	Infinity Blue
SGM1880S ••	I/O Mirror

**Pathfinder™** ANSI

Metal frame features traditional aviator style

Part No.	Gold Metal Frame
SG310A •	Clear



ANSI Z87.1 CE EN166 CSA Z94.3

All safety eyewear meets ANSI Z87.1+ standards (•) and provide 99% protection from harmful UV rays. All lenses are hard coated polycarbonate scratch-resistant unless otherwise noted. Some options meet European (EN166) (•) or Canadian (CSA Z94.3) (•) standards. For specific lens options visit our website or contact your sales representative.



Zone® ANSI

Lightweight nylon frame

Part No.	Black Frame
SB910E •	Clear
SB920E •	Gray



Fastrac® ANSI

Frame/lens combination provides maximum single lens protection

Part No.	Lens and Temples
S1410S •	Clear
S1420S •	Gray



GT 2000® ANSI

Frameless lightweight design

Part No.	Black Temples
SB2010S •	Clear
SB2020S •	Gray



Integra® ANSI CE CSA AUS



ADJUSTABLE
TEMPLES

Adjustable temples ensure reliable performance



Part No.	Black Frame	
SB410S ●●●●	Clear	
PYSB410S* ●	Clear	
SB410ST ●●●●	AF	Clear
SB420S ●●●●	Gray	
PYSB420S* ●	Gray	
SB430S ●●●●	Amber	
SB450SF ●●●●	5.0 IR Filter	
SB460SF ●●●●	3.0 IR Filter	

Part No.	Black Ratchet Frame	
SB410SR ●	Clear	

*Pyramex retail packaged product



Part No.	Mixed Blue Frame	
SM410S ●	Clear	



Part No.	Red Frame	
SR410S ●	Clear	



Part No.	Blue Frame	
SN410S ●●	Clear	



Part No.	Red, White & Blue Frame	
SNWR410S ●	Clear	

Zone II® ANSI CE AUS



RUBBER
TIPS

Built-in nosepiece

Straight back, rubber coated temple tips



Part No.	Matte Black Frame	
SB3310E ●●	Clear	
SB3320E ●●●●	Gray	
SB3345E ●●●●	Ice Orange Mirror	
SB3365E ●●●●	Ice Blue Mirror	
SB3370E ●●●●	Silver Mirror	
SB3380E ●●●●	I/O Mirror	



Part No.	Blue Wood Frame	
SBW3320E ●	Gray	



Part No.	Red Wood Frame	
SRW3320E ●●●●	Gray	
SRW3370E ●●●●	Silver Mirror	



Part No.	Silver Frame	
SS3320E ●●●●	Gray	
SS3345E ●●●●	Ice Orange Mirror	
SS3365E ●●●●	Ice Blue Mirror	
SS3370E ●●●●	Silver Mirror	
SS3375E ●●●●	Blue Mirror	

ANSI Z87.1 CE EN166 CSA Z94.3 AUS NSZ1337

All safety eyewear meets ANSI Z87.1+ standards (●) and provide 99% protection from harmful UV rays. All lenses are hard coated polycarbonate scratch-resistant unless otherwise noted. Some options meet European [EN166] (●), Canadian [CSA Z94.3] (●) or Australian [AS/NZS 1337] (●) standards. For specific lens options visit our website or contact your sales representative.



Fortress® ANSI



ADJUSTABLE NOSEPIECE



VENTED LENS



RUBBER TIPS

Adjustable nosepiece

Straight back rubber coated temple tips

Vented lens allows air to flow away from the lens



Part No.	Black Frame
SB3710D •	Clear
SB3710DT •	AF Clear
SB3715D •	Coffee
SB3720D •	Gray
SB3730D •	Amber
SB3760D •	Infinity Blue
SB3770D •	Silver Mirror
SB3780D •	I/O Mirror

Part No.	Silver Frame
SS3710D •	Clear
SS3720D •	Gray
SS3732D •	Mango
SS3770D •	Silver Mirror
SS3780D •	I/O Mirror

Part No.	Gray Frame
SG3710D •	Clear

Legacy® ANSI



RUBBER NOSEPIECE



ADJUSTABLE TEMPLES



Soft rubber nosepiece

Temples adjust to four settings

Part No.	Black Temples
SB2310S •	Clear
SB2320S •	Gray

Pacifica® ANSI



VENTED FRAME



RATCHETING TEMPLES



ADJUSTABLE TEMPLES



Vented rubber frame

Brow guard provides cushioned protection

Adjustable ratchet temples

Part No.	Black Frame
SB3410S •	Clear
SB3420S •	Gray

READERS

V2G® Readers ANSI CSA



FOAM PADDING



INCLUDES STRAP



RATCHETING TEMPLES



VENTED FRAME



SEE PAGE 23

Part No.	Black Frame	
GB1810STR15 ●●	AF	Clear H2X +1.5 Mag
GB1810STR20 ●●	AF	Clear H2X +2.0 Mag
GB1810STR25 ●●	AF	Clear H2X +2.5 Mag

XSG® Readers ANSI CSA



FOAM PADDING



INCLUDES STRAP

SEE PAGE 24



Part No.	Black Frame	
GB4010STR15 ●●	AF	Clear H2X +1.5 Mag
GB4010STR20 ●●	AF	Clear H2X +2.0 Mag
GB4010STR25 ●●	AF	Clear H2X +2.5 Mag

PMXTREME® Readers ANSI



RUBBER NOSEPIECE



INCLUDES STRAP



RUBBER TIPS

SEE PAGE 36

Part No.	Black Frame with Cord	
SB6310SPR15 ●		Clear +1.5 Mag
SB6310SPR20 ●		Clear +2.0 Mag
SB6310SPR25 ●		Clear +2.5 Mag

Ztek® Readers ANSI CE CSA



RUBBER TIPS

SEE PAGE 40



Part No.	Black Temple Tips	
S2510R15 ●●●		Clear +1.5 Mag
S2510R20 ●●●		Clear +2.0 Mag
S2510R25 ●●●		Clear +2.5 Mag
S2514R15 ●		1.5 IR Filter +1.5 Mag
S2514R20 ●		1.5 IR Filter +2.0 Mag
S2520R15 ●		Gray +1.5 Mag
S2520R20 ●		Gray +2.0 Mag
S2520R25 ●		Gray +2.5 Mag

Intruder® Readers ANSI



SEE PAGE 38

Part No.	Lens and Temples	
S4110R15 ●		Clear +1.5 Mag
S4110R20 ●		Clear +2.0 Mag
S4110R25 ●		Clear +2.5 Mag

Venture II® Readers

ANSI CE CSA



RUBBER NOSEPIECE



ADJUSTABLE TEMPLES

SEE PAGE 32



Part No.	Black Frame	
SB1810R10 ●●●		Clear +1.0 Mag
SB1810R15 ●●●		Clear +1.5 Mag
SB1810R15T ●●	AF	Clear H2X +1.5 Mag
SB1810R20 ●●●		Clear +2.0 Mag
SB1810R20T ●●	AF	Clear H2X +2.0 Mag
SB1810R25 ●●●		Clear +2.5 Mag
SB1810R25T ●●	AF	Clear H2X +2.5 Mag
SB1810R30 ●●●		Clear +3.0 Mag
SB1820R15 ●●		Gray +1.5 Mag
SB1820R20 ●●		Gray +2.0 Mag
SB1820R25 ●●		Gray +2.5 Mag
SB1820R30 ●●		Gray +3.0 Mag
SB1830R15 ●		Amber +1.5 Mag
SB1830R20 ●		Amber +2.0 Mag
SB1830R25 ●		Amber +2.5 Mag
SB1880R15 ●●		I/O Mirror +1.5 Mag
SB1880R20 ●●		I/O Mirror +2.0 Mag
SB1880R25 ●●		I/O Mirror +2.5 Mag

ANSI Z87.1 CE EN166 CSA Z94.3

All safety eyewear meets ANSI Z87.1+ standards (●) and provide 99% protection from harmful UV rays. All lenses are hard coated polycarbonate scratch-resistant unless otherwise noted. Some options meet European (EN166) (●) or Canadian (CSA Z94.3) (●) standards. For specific lens options visit our website or contact your sales representative.



Emerge® ANSI CE CSA



Soft nosepiece provides comfort for extended use

Will accommodate an Rx lens to the maximum of +3 to -3 diopters

Available with a full reader +1.5 or +2.0 lens or as a prescription lens

Dual lens design with full eye protection

Plano lens, prescription lens, and full reader lens adaptable

Emerge frame must be presented to your optometrist in order to be fitted with prescription lenses



Part No.	Black Frame
SB7910DRX ●●●	Clear
SB7910D15 ●●●	Clear +1.5 Mag
SB7910D20 ●●●	Clear +2.0 Mag

Part No.	Translucent Gray Frame
SG7910DRX ●●●	Clear
SG7910D15 ●●●	Clear +1.5 Mag
SG7910D20 ●●●	Clear +2.0 Mag

Part No.	Translucent Caramel Frame
STC7910DRX ●●●	Clear
STC7910D15 ●●●	Clear +1.5 Mag
STC7910D20 ●●●	Clear +2.0 Mag

Emerge Plus ANSI CSA



Soft nosepiece provides comfort for extended use

Will accommodate an Rx lens to the maximum of +3 to -3 diopters



Part No.	Translucent Gray Frame
SG9810R15 ●●	Clear full reader +1.5 Mag
SG9810R20 ●●	Clear full reader +2.0 Mag
SG9810R25 ●●	Clear full reader +2.5 Mag
SG9810R30 ●●	Clear full reader +3.0 Mag

Part No.	Translucent Gray Frame
SG9810TR15 ●●	Clear top insert +1.5 Mag
SG9810TR20 ●●	Clear top insert +2.0 Mag
SG9810TR25 ●●	Clear top insert +2.25 Mag

The top insert reader for the EmERGE Plus is strategically placed at the top of the lens — perfect for applications in which user is frequently looking up.

PMXTREME® LED Readers ANSI



Part No.	Black Frame
SB6310STPLEDR15 ●	AF Clear +1.5 Mag
SB6310STPLEDR20 ●	AF Clear +2.0 Mag
SB6310STPLEDR25 ●	AF Clear +2.5 Mag



GOGGLES



V2G-Plus®

ANSI CE CSA AUS BALLISTIC

DUAL PANE
LENSINCLUDES
STRAP

Includes a wide adjustable elastic strap with quick release system for secure fit

TPU frame features excellent resistance to cold and heat

Thermo Lens System provides excellent resistance to fogging caused by temperature difference between indoor and outdoor or between on-site and ambient environment

Special indirect ventilation system located at the top and bottom of frame allow air flow and heat release

Multi-functional goggle with 180° vision, protects against chemical splash, sun glare, dust, flying particles, wind

Outer polycarbonate lens protects against the environment, while an inner lens prevents fogging

Inner lens is made from acetate, separated by a thin spacer of air, sealed together with foam

Passes MIL-PRF 32432 High Velocity Impact Standards

Passes D3: Droplet and Splash Test – provides protection from droplets and splashes

V2G-Plus Rx Insert

Specially designed for a variety of prescription lens options

Extremely lightweight for comfort

Includes micro-fiber storage case

Take insert to local optometrist for Rx lens installation

Part No.

RX6400



Rx lens insert easily snaps securely into place above nosepiece

Part No.

Black Goggle with Strap

GB6410SDT	●●●●	AF	Clear Dual Pane H2X
GB6420SDT	●●●●	AF	Gray Dual Pane H2X

ANSI Z87.1 CE EN166 CSA Z94.3 AUS NSZ1337 BALLISTIC

All safety eyewear meets ANSI Z87.1+ standards (●) and provide 99% protection from harmful UV rays. All lenses are hard coated polycarbonate scratch-resistant unless otherwise noted. Some options meet European [EN166] (●), Canadian [CSA Z94.3] (●), Australian [AS/NZS 1337] (●) or Ballistic [MIL-PRF-32432] (●) standards. For specific lens options visit our website or contact your sales representative.



Capstone® Shield

ANSI CE CSA



INCLUDES STRAP

- Fully adjustable elastic band
- Fits over prescription glasses
- Lens is coated to prevent fogging
- GG504DTSIELD goggle has a dual pane lens
- Soft vinyl goggle body conforms to facial contours
- Goggle provides protection against dust and chemical splash
- Removable vent caps allow the user to remove when more ventilation is required or leave in place for unsurpassed chemical splash resistance
- Goggle incorporated with removable shield provides full face protection
- 4 ventilation holes provide appropriate airflow
- Ratchet shield allows user to open or close in 3 positions for adjustment
- Polycarbonate shield conforms to the face offering increased impact and dust protection



Replacement shield for the Capstone Shield is available. See Capshield on page 55.

Part No.	Lens and Shield	
GG504TSHIELD ●●●	AF	Clear H2X
GG504DTSIELD ●●	AF	Clear Dual Pane H2X
GG504TSHIELDIR3 ●●●	AF	3.0 IR Filter H2X
GG504TSHIELDIR5 ●●●	AF	5.0 IR Filter H2X

Only the goggles for GG504TSHIELDIR3 and GG504TSHIELDIR5 contains IR dye. Due to the nature of the vented holes, the shield is only green tinted and does not contain the IR resin.



Disposable Capstone Shield Visors

Part No. VPACK6

Pack of 6 clear disposable, tear-off visors, suitable for high dust or muddy working environments.



GOGGLES



Capstone® RL ANSI CE CSA

MULTI
LENSESINCLUDES
STRAP

Lens is interchangeable

Fits over prescription glasses

Indirect ventilation system prevents fogging

Co-material goggle provides superior protection against dust entry and chemical splash

Thermoplastic (TPE) body with universal nose bridge is flexible and contours to the user's face

G804TRL passes D3: Droplet and Splash Test – provides protection from droplets and splashes



Part No. Gray Goggle with Neoprene Strap

G804TRL ●●●	AF	Clear H2X
G824TRL ●●	AF	Gray H2X
R804T ●●●	AF	Replacement Clear H2X
R824T ●●	AF	Replacement Gray H2X

Part No.

R8NEO	Replacement neoprene strap
R8CLO	Replacement cloth strap

Capstone 600 Series ANSI CE CSA AUS BALLISTIC

INCLUDES
STRAP

Fits over prescription glasses

Indirect ventilation system prevents fogging

Includes interchangeable cloth and neoprene straps

Co-material goggle provides superior protection against dust entry and chemical splash

Thermoplastic (TPE) body with universal nose bridge is flexible and contours to the user's face

Passes D3: Droplet and Splash Test – provides protection from droplets and splashes

Passes D4: Dust Test – provides protection from dust particles

Passes MIL-PRF 32432 High Velocity Impact Standards

Part No. Gray Goggle with Adjustable Strap

G604T2 ●●●●	AF	Clear H2X
-------------	----	-----------

ANSI Z87.1 CE EN166 CSA Z94.3 AUS NSZ1337 BALLISTIC



All safety eyewear meets ANSI Z87.1+ standards (●) and provide 99% protection from harmful UV rays. All lenses are hard coated polycarbonate scratch-resistant unless otherwise noted. Some options meet European (EN166) (●), Canadian (CSA Z94.3) (●), Australian (AS/NZS 1337) (●) or Ballistic (MIL-PRF-32432) (●) standards. For specific lens options visit our website or contact your sales representative.



Capstone® Dual Lens **ANSI CE CSA AUS BALLISTIC**



- Fully adjustable elastic strap
- Fits over prescription glasses
- Lens is coated to prevent fogging
- Dual pane lens consists of polycarbonate lens on the outer side with acetate anti-fog lens on inner side
- Soft vinyl goggle body conforms to facial contours
- Provides protection against dust and chemical splash
- Removable vent caps allow the user to remove when more ventilation is required or leave in place for unsurpassed chemical splash resistance
- G504DT passes D3: Droplet and Splash Test – provides protection from droplets and splashes
- Passes MIL-PRF 32432 High Velocity Impact Standards



Part No.	Gray Goggle with Quick Release Strap
G504DT ●●●●●	AF Clear Dual Pane H2X

Capstone 500 Series **ANSI CE CSA AUS BALLISTIC**

- Fits over prescription glasses
- Lens is coated to prevent fogging
- Soft vinyl goggle body conforms to facial contours
- Goggle provides protection against dust and chemical splash
- Removable vent caps allow the user to remove when more ventilation is required or leave in place for unsurpassed chemical splash resistance
- GG504T passes D3: Droplet and Splash Test – provides protection from droplets and splashes
- Passes MIL-PRF 32432 High Velocity Impact Standards



Part No.	Gray Goggle with Quick Release Strap
GG504T ●●●●●	AF Clear H2X
Part No.	Chemical Green Goggle with Neoprene Strap
GC504TN ●●●	AF Clear H2X

Capstone Face Shield and Strap

Ratcheting shield includes strap and clips allowing the user to add to either of the Capstone 500 Series goggles

Sold as a replacement shield for GG504TSHIELD and GG504DTSHIELD

Part No.	CAPSHIELD
-----------------	-----------



GOGGLES

Wire Mesh Goggle **ANSI**

Single wire mesh lens with PVC frame

Applications: forestry, landscaping and agriculture

For work environments with extreme heat and high humidity where impact protection is required

Low profile design with a wide elastic strap provides a secure fit

Wire mesh allows proper airflow and protects against flying debris

Soft rubber gasket seals out unwanted particles and is comfortable for all day wear

Meets ANSI Z87.1-2015 wire screen requirements

Part No. **Black Goggle with Adjustable Strap**

G9WMG •  Black Wire Mesh

Low Profile Goggle **ANSI CE CSA**

Low profile, modern sport design with anti-glare frame

Direct ventilation prevents fogging

Adjustable elastic band and soft PVC frame

Part No. **Gray Goggle with Black Strap**

G704T ••• AF Clear

PYG704T* • AF Clear

G724T •• AF Gray

*Pyramex retail packaged product

ANSI Z87.1 **CE EN166** **CSA Z94.3** **AUS NSZ1337**

All safety eyewear meets ANSI Z87.1+ standards (•) and provide 99% protection from harmful UV rays. All lenses are hard coated polycarbonate scratch-resistant unless otherwise noted. Some options meet European [EN166] (•), Canadian [CSA Z94.3] (•) or Australian [AS/NZS 1337] (•) standards. For specific lens options visit our website or contact your sales representative.

Chemical Splash Goggle **ANSI**

Chemical splash goggle with indirect vents

Designed to be better suited for slimmer facial sizes

Frame is extremely soft, flexible and lightweight

Part No. **Blue Goggle with Adjustable Strap**

GN904 •  Clear

Top Shelf Chemical Splash Goggle **ANSI CE CSA**

Special one-way vent allows air to enter while keeping liquids out

Top shelf chemical splash goggle features generously sized heavy duty body and lens

G304TN comes with a neoprene strap

G304T passes D3: Droplet and Splash Test – provides protection from droplets and splashes

G304T passes D4: Dust Test – provides protection from dust particles

Part No. **Tinted Goggle with Black Strap**

G304 •••  Clear

G304T ••• AF Clear **H2X**

Part No. **Tinted Goggle with Neoprene Strap**

G304TN • AF Clear **H2X**



Top Shelf Chemical Splash Goggle with Foam Padding **ANSI**



Breakaway headband provides added protection and features quick fit retainer

Top shelf chemical splash goggle features generously sized heavy duty body and lens with foam padding for comfort

Special one-way vent allows air to enter while keeping liquids out

Part No.	Tinted Goggle with Black Strap
G404T •	AF Clear H2X

Perforated Goggle **ANSI CE**



Perforated, provides excellent ventilation

Part No.	Clear Goggle with Black Strap
G201 ••	Clear
G201T •••	AF Clear
PYG201T* •	AF Clear

*Pyramex retail packaged product

Ventless Goggle **ANSI**



Ventless goggle provides protection against odor vapors

Part No.	Clear Goggle with Black Strap
G200T •	AF Clear H2X

Chemical Goggle **ANSI CE AUS**



Chemical splash goggle features vent caps to restrict influx of liquids

Part No.	Clear Goggle with Black Strap
G204 ••	Clear
G204T •••	AF Clear
PYG204T* •	AF Clear

*Pyramex retail packaged product

PREMIUM EYEWEAR



Brevard® ANSI CSA



Full wrap-around lens provides excellent impact protection

Vented foam padded frame provides superior comfort with great air flow

Part No.	Shiny Black Frame	
VGSB1010DTB ●●	AF	Clear
VGSB1026DTB ●●	AF	Forest Gray
VGSB1057DTB ●●	AF	Green Mirror
Part No.	Camo Frame	
VGSCM1010DTB ●●	AF	Clear
VGSCM1018DTB ●●	AF	Bronze
VGSCM1026DTB ●●	AF	Forest Gray



Atwater™ ANSI CSA



Soft, rubber nosepiece

Wide straightback temples



Part No.	Black Frame	
VGSB1226T ●●	AF	Forest Gray H2X
VGSB1265T ●●	AF	Ice Blue Mirror



Part No.	Black and Silver Frame	
VGSSB1226T ●●	AF	Forest Gray H2X
VGSSB1265T ●●	AF	Ice Blue Mirror

ANSI Z87.1 CSA Z94.3

All safety eyewear meets ANSI Z87.1+ standards (●●) and provide 99% protection from harmful UV rays. All lenses are hard coated polycarbonate scratch-resistant unless otherwise noted. Some options Canadian [CSA Z94.3] (●●) standards. For specific lens options visit our website or contact your sales representative.



Pagosa® ANSI



Wide straightback temples

Soft rubber nosepiece

Part No.	Black Frame	
VGSB518T •	AF	Bronze
VGSB522T •	AF	Forest Gray
VGSB523 •		Polarized Forest Gray
VGSB565T •	AF	Ice Blue Mirror
VGSB570T •	AF	Silver Mirror
Part No.	White Frame	
VGSW518T •	AF	Bronze
VGSW522T •	AF	Forest Gray
VGSW561 •		Polarized Ice Blue Mirror
VGSW565T •	AF	Ice Blue Mirror



PREMIUM EYEWEAR

Tensaw® ANSI



ADJUSTABLE NOSEPIECE



CO-INJECTED TEMPLES



POLARIZED OPTION

Adjustable rubber nosepiece

Co-injected temples for snug, secure fit

Half-frame high performance eyewear



Part No.	Black and Gray Frame	
VGSB310T •	AF	Clear
VGSB318T •	AF	Bronze
VGSB322T •	AF	Forest Gray
VGSB323 •		Polarized Forest Gray
VGSB327T •	AF	Vermilion

Part No.	Black and Gray Frame	
VGSB330T •	AF	Yellow
VGSB331 •		Polarized Green Mirror
VGSB365T •	AF	Ice Blue Mirror
VGSB370T •	AF	Silver Mirror



Part No.	White and Gray Frame	
VGSW365T •	AF	Ice Blue Mirror



Part No.	White and Blue Frame	
VGSW365T •	AF	Ice Blue Mirror



Part No.	White and Red Frame	
VGSWR351 •		Polarized Sky Red Mirror
VGSWR355T •	AF	Sky Red Mirror

Ocoee® ANSI CSA



CO-INJECTED TEMPLES



Co-injected temples for snug, secure fit

Foldable structure at nosebridge provides ultra comfort for extended use without slipping

Part No.	Black Frame	
VGSB118TB ••	AF	Bronze H2X
VGSB122TB ••	AF	Forest Gray H2X
VGSB155TB ••	AF	Sky Red Mirror
VGSB157TB ••	AF	Green Mirror
VGSB170TB ••	AF	Silver Mirror
Part No.	White and Blue Frame	
VGSW165TB ••	AF	Ice Blue Mirror



The unique properties of the copolymer nosepiece and temples allow you to conform the Ocoee to the head while retaining the shape.

ANSI Z87.1 CSA Z94.3

All safety eyewear meets ANSI Z87.1+ standards (••) and provide 99% protection from harmful UV rays. All lenses are hard coated polycarbonate scratch-resistant unless otherwise noted. Some options Canadian (CSA Z94.3) (•) standards. For specific lens options visit our website or contact your sales representative.

Vallejo® ANSI CSA



RUBBER NOSEPIECE



VENTED FRAME



POLARIZED OPTION

Built-in rubber nosepiece

Vented frame increases air flow to prevent fogging



Part No.	Black Frame
VGSB922T ●●	AF Forest Gray
VGSB931 ●●	Polarized Green Mirror
VGSB965T ●●	AF Ice Blue Mirror



Part No.	White Frame
VGSW922T ●●	AF Forest Gray
VGSW931 ●●	Polarized Green Mirror
VGSW965T ●●	AF Ice Blue Mirror



Part No.	Tortoise Frame
VGST918T ●●	AF Bronze



Part No.	Clear Frame
VGSC965T ●●	AF Ice Blue Mirror

Zumbro® ANSI



RUBBER NOSEPIECE



CO-INJECTED TEMPLES

Soft, rubber nosepiece

Co-injected temple design includes soft rubber tips



Part No.	Bronze Frame
VGSBR210T ●	AF Clear
VGSBR218T ●	AF Bronze
VGSBR222T ●	AF Forest Gray
VGSBR227T ●	AF Vermilion
VGSBR230T ●	AF Yellow

PREMIUM EYEWEAR


Montello® ANSI CSA

Full frame, dual lens design

Durable, flexible nylon frame and temples

Built-in nosepiece

Part No.	Black Frame	
VGSB618TB ●●	AF	Bronze H2X
VGSB622TB ●●	AF	Forest Gray H2X
VGSB670TB ●●	AF	Silver Mirror


Waverton ANSI
RUBBER
NOSEPIECECO-INJECTED
TEMPLES

Flexible rubber nosepiece

Co-injected straight-back temples

Part No.	Black Frame	
VGSB1126DB ●		Forest Gray
VGSB1165DB ●		Ice Blue Mirror
VGSB1170DB ●		Silver Mirror

Part No.	Brown Frame	
VGSBR1118DB ●		Bronze
VGSBR1156DB ●		Multi-Color Mirror



ANSI Z87.1

CE EN166

CSA Z94.3

BALLISTIC

All safety eyewear meets ANSI Z87.1+ standards (●) and provide 99% protection from harmful UV rays. All lenses are hard coated polycarbonate scratch-resistant unless otherwise noted. Some options meet European [EN166] (●), Canadian [CSA Z94.3] (●) or Ballistic [MIL-PRF-32432] (●) standards. For specific lens options visit our website or contact your sales representative.



Drop Zone® ANSI CE CSA BALLISTIC



RUBBER NOSEPIECE



MULTI LENSES



Stylish contoured temples

Extremely lightweight

Rubber nosepiece

Easy to change replacement lenses

Passes MIL-PRF 32432 High Velocity Impact Standards

Drop Zone includes: removable temples, crush-resistant neoprene storage case, microfiber cleaning cloth, and four interchangeable lenses

Part No.

VGSB88KIT ●●●●

Black Temples

- AF Clear H2X
- AF Forest Gray H2X
- AF Orange H2X
- AF Vermilion H2X

PREMIUM EYEWEAR



VENTUREGEAR
TACTICAL

Stonewall®

ANSI CSA BALLISTIC



RUBBER
NOSEPIECE



RUBBER
TIPS



Built-in rubber nosepiece

Durable, flexible nylon frame and straight-back temples

Passes MIL-PRF 32432 High Velocity Impact Standards

Part No.	Black Frame
VGSB418T ●●●	AF Bronze
VGSB422T ●●●	AF Forest Gray
VGSB465T ●●●	AF Ice Blue Mirror
VGSB470T ●●●	AF Silver Mirror

Drone® ANSI CSA BALLISTIC



RUBBER
NOSEPIECE



ADJUSTABLE
NOSEPIECE



CO-INJECTED
TEMPLES

Half-frame design with co-injected temples

Adjustable rubber nosepiece

Passes MIL-PRF 32432 High Velocity Impact Standards

Part No.	Black Frame
VGSB8310ST ●●●	AF Clear
VGSB8320ST ●●●	AF Gray
VGSB8370S ●●●	Silver Mirror



ANSI Z87.1 CSA Z94.3 BALLISTIC

All safety eyewear meets ANSI Z87.1+ standards (●) and provide 99% protection from harmful UV rays. All lenses are hard coated polycarbonate scratch-resistant unless otherwise noted. Some options meet Canadian [CSA Z94.3] (●) or Ballistic [MIL-PRF-32432] (●) standards. For specific lens options visit our website or contact your sales representative.



Overwatch® **ANSI BALLISTIC**



Soft nosepiece and rubber temple tips provide comfort for all-day use

Passes MIL-PRF 32432 High Velocity Impact Standards

Part No.	Black Frame
VGSB718T ●●	AF Bronze H2X
VGSB722T ●●	AF Forest Gray H2X
VGSB770T ●●	AF Silver Mirror
Part No.	OD Green Frame
VGSG718T ●●	AF Bronze H2X
VGSG722T ●●	AF Forest Gray H2X



carhartt

Billings® ANSI CSA



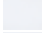




CO-INJECTED
TEMPLES

Lightweight, frameless design

Wrap-around coverage for superior protection

Available in a Carhartt clamshell or polybag



Clamshell Part No.	Polybag Part No.	Lens and Temples	
-	CH110S ●●		Clear
CH110STCS ●●	CH110ST ●●		Clear
-	CH118S ●●		Sandstone Bronze
-	CH120S ●●		Gray
CH120STCS ●●	CH120ST ●●		Gray

Spokane® ANSI CSA



RUBBER
NOSEPIECE



CO-INJECTED
TEMPLES




Flexible rubber nosepiece

Co-injected straight-back temples

Unique half-frame design for the active lifestyle

Available in a Carhartt capture clam or polybag



Clamshell Part No.	Polybag Part No.	Black Frame	
CHB310DCC ●●	CHB310D ●●		Clear
CHB318DCC ●●	CHB318D ●●		Sandstone Bronze
CHB320DCC ●●	CHB320D ●●		Gray

ANSI Z87.1 CSA Z94.3

All safety eyewear meets ANSI Z87.1+ standards (●●) and provide 99% protection from harmful UV rays. All lenses are hard coated polycarbonate scratch-resistant unless otherwise noted. Some options Canadian [CSA Z94.3] (●●) standards. For specific lens options visit our website or contact your sales representative.



Carbondale® ANSI CSA



RUBBER NOSEPIECE



CO-INJECTED TEMPLES

Flexible rubber nosepiece

Co-injected temples

Available in a Carhartt capture clam or polybag



Capture Clam Part No.	Polybag Part No.	Black and Tan Frame
CHB210DCC ●●	CHB210D ●●	Clear
—	CHB210DT ●●	AF Clear
CHB218DCC ●●	CHB218D ●●	Sandstone Bronze
CHB220DCC ●●	CHB220D ●●	Gray
—	CHB220DT ●●	AF Gray
CHB290DCC ●●	CHB290D ●●	Antique Mirror
Capture Clam Part No.	Polybag Part No.	Realtree Xtra® Camo Frame
CHRT218DCC ●●	CHRT218D ●●	Sandstone Bronze
CHRT220DCC ●●	CHRT220D ●●	Gray
CHRT290DCC ●●	CHRT290D ●●	Antique Mirror

Ironsides® ANSI



RUBBER NOSEPIECE



RUBBER TIPS

Straight-back vented, flexible temples

Rubber nosepiece

Rubber temple tips

Available in a Carhartt capture clam or polybag



Capture Clam Part No.	Polybag Part No.	Black and Tan Frame
CHB618DTCC ●	CHB618DT ●	AF Sandstone Bronze
CHB620DTCC ●	CHB620DT ●	AF Gray
CHB690DTCC ●	CHB690DT ●	AF Antique Mirror
Capture Clam Part No.	Polybag Part No.	Realtree Xtra® Camo Frame
CHRT618DTCC ●	CHRT618DT ●	AF Sandstone Bronze
CHRT620DTCC ●	CHRT620DT ●	AF Gray
CHRT690DTCC ●	CHRT690DT ●	AF Antique Mirror



Rockwood® **ANSI** **CSA**



ADJUSTABLE
NOSEPIECE



CO-INJECTED
TEMPLES

Suspended anti-fog lens

Adjustable rubber nosepiece and
co-injected temple tips

Available in a Carhartt capture clam
or polybag



Capture Clam Part No.	Polybag Part No.	Black and Tan Frame	
—	CHB7100T ●●	AF	Clear
CHB718DTCC ●●	CHB718DT ●●	AF	Sandstone Bronze
CHB720DTCC ●●	CHB720DT ●●	AF	Gray

ANSI Z87.1

CSA Z94.3

All safety eyewear meets ANSI Z87.1+ standards (●●) and provide 99% protection from harmful UV rays. All lenses are hard coated polycarbonate scratch-resistant unless otherwise noted. Some options Canadian [CSA Z94.3] (●●) standards. For specific lens options visit our website or contact your sales representative.



Carthage® **ANSI** **CSA**



Indirect vented foam padded carriage

Interchangeable temples/strap are included

Available in a Carhartt polybag

Polybag Part No.	Black and Tan Frame	
CHB410DTP ●●	AF	Clear
CHB418DTP ●●	AF	Sandstone Bronze
CHB420DTP ●●	AF	Gray
Polybag Part No.	Realtree Xtra® Camo Frame	
CHRT410DTP ●●	AF	Clear
CHRT420DTP ●●	AF	Gray





DUCKS
UNLIMITED

OFFICIAL
LICENSED
PRODUCTS

Shooting Eyewear

ANSI BALLISTIC



ADJUSTABLE
NOSEPIECE



Passes MIL-PRF 32432 High Velocity Impact Standards

Includes Ducks Unlimited shooting glass and microfiber storage bag

Part No.	OD Green Frame
DUSB6610D ●●	Clear
DUSB6627D ●●	Vermilion
DUSB6628D ●●	Forest Gray
DUSB6640D ●●	Orange

DUCLAM2 and DUCAB2

ANSI CSA



RUBBER
NOSEPIECE



MULTI
LENSES



CO-INJECTED
TEMPLES

Soft nosepiece for snug fit

Semi-frame and slim co-injected temple design for lightweight spectacle – 22 gm

Offers a clear panoramic view without obstruction

DUCLAM2 and DUCAB2 include: neoprene case with DU logo, microfiber cleaning bag with DU logo, and four interchangeable lenses

Part No.	
DUCLAM2 ●●	Ducks Unlimited freestanding clamshell for counter top or pegboard display
DUCAB2 ●●	Ducks Unlimited box

Black Frame

Clear
Forest Gray
Amber
Vermilion

ANSI Z87.1 CSA Z94.3 BALLISTIC

All safety eyewear meets ANSI Z87.1+ standards (●●) and provide 99% protection from harmful UV rays. All lenses are hard coated polycarbonate scratch-resistant unless otherwise noted. Some options meet Canadian (CSA Z94.3) (●●) or Ballistic (MIL-PRF-32432) (●●) standards. For specific lens options visit our website or contact your sales representative.



DUCAB and DUCLAM1 ANSI BALLISTIC

- 
ADJUSTABLE NOSEPIECE
- 
ADJUSTABLE TEMPLES
- 
RATCHETING TEMPLES
- 
MULTI LENSES

- Ventilated, adjustable nosepiece
- Temples adjust to four different lengths
- Ratcheting lens pitch adjustment
- Passes MIL-PRF 32432 High Velocity Impact Standards

DUCAB and DUCLAM1 include: Realtree Advantage® MAX-4HD™ neoprene case with DU logo, microfiber cleaning bag with DU logo, camo breakaway cord, and five interchangeable anti-fog lenses

Black Frame	
AF	Clear H2X
AF	Amber H2X
AF	Sun Block Orange H2X
AF	Orange H2X
AF	Vermilion H2X

Part No.	
DUCLAM1 ●●	Ducks Unlimited freestanding clamshell for counter top or pegboard display
DUCAB ●●	Ducks Unlimited box



Part No.
GALSOL Gallon of Lens Cleaning Solution



Part No.
LCC100 Canister with 100 Lens
Cleaning Tissues



Part No.
LCT100 100 Individually Packaged 5x8
Cleaning Towelettes
LT760 760 Individually Packaged 5x8
Cleaning Towelettes
LCTBULK 100 Individually Packaged 5x8
Cleaning Towelettes in a bag



Part No.
LCS10 8 oz. Lens Cleaning Station
with 600 Tissues
LT300 Refill Tissues for LCS10 and LCS20



Part No.
LCS20 16 oz. Lens Cleaning Station
with 1,200 Tissues
LCB16 16 oz. Cleaning Solution Replacement
Bottle with Pump



Part No.
CLEANCLOTH 7" x 6" Black Nylon Microfiber Spectacle Cleaning Cloth



Part No.
PYRBAGS 7.5" x 4" Black Cloth Drawstring Spectacle Bag
PYRBAGLG 9.875" x 5.125" Black Cloth Drawstring Spectacle Bag



Part No.
CA200B Zippered Spectacle Case



Part No.
CA500B Hard Spectacle Case

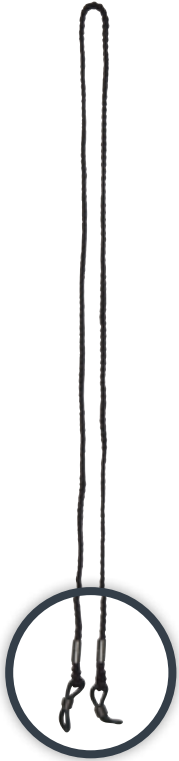


Part No.
NEOCASE Zippered Neoprene Case



Part No.
SS100 Slip on Side Shields Meets ANSI Z87.1 High Impact Requirements Only

ACCESSORIES



Part No.
CORDS Black
 Lanyard Loop



Part No.
CLIPCORDS Black
 Clip-On Cord



Part No.
CORDS1A Black
 Cotton Cord



Part No.
CORDS7A Black
 Cord with
 Rubber Tips



Part No.
CORDS8A Black
 Breakaway Cord



Part No.
CORDS9A Black
 Bungee Cord



Part No.
NEOCORD Black Neoprene
 Breakaway Cord



Part No.
NEO1 Black
 Neoprene Cord



Part No.
DIS5BL Blue Stationary Display - holds up to 5 units (product sold separately)



Part No.
DIS5CF Stationary Display - holds up to 5 units (product sold separately)



Part No.
DIS5 Silver Corrugated Stationary Display - holds up to 5 units (product sold separately)



Part No.
DIS9 Silver Corrugated Stationary Display - holds up to 9 units (product sold separately)



Part No.
DIS9TR Stationary Display - holds up to 9 units (product sold separately)



Part No.
DISPLAY Rotating Display - holds up to 36 units (product sold separately)

DISPLAYS

**Part No.**

VGDIS9 Venture Gear Stationary Display - holds up to 9 units (product sold separately). Hardware included to mount display to slatwall, pegboard or gridwall.

**Part No.**

VGDIS16 Venture Gear Stationary Display - holds up to 16 units (product sold separately). Hardware included to mount display to slatwall, pegboard or gridwall.

**Part No.**

VGDIS3 Venture Gear Stationary Display - holds up to 3 units (product sold separately)

**Part No.**

VGTDIS3 Venture Gear Tactical Stationary Display - holds up to 3 units (product sold separately)



Part No.
CHIC6 Carhartt Stationary Display - holds up to 6 units (product sold separately)



Part No.
CHCASE Carhartt Case - holds up to 8 units (product sold separately)



Part No.
CHPWRPNL Carhartt Power Panel Display - holds up to 72 units (product sold separately). Display includes: 4 "try on" glasses, hardware to hang, hooks, and identification cards.



Part No.
CHSWD20 Carhartt Slat Wall Display - holds up to 20 units (product sold separately). Display includes 4 "try on" glasses.



Part No.
CHBD144 Carhartt Unit Bulk Display - holds up to 144 units (product sold separately). Display includes: 12 "try on" glasses and identification cards.



Part No.
CHCSD24 Carhartt Unit Countertop Spinner Display - holds up to 24 units (product sold separately). Display includes: 6 "try on" glasses and identification cards.



Part No.
CHDIH Carhartt Display Industrial Hook - holds up to 6 units. Hangs on CHSW200 and CHCSD24 to convert from retail to industrial displays.





Headgear certifications

All Pyramex headgear products have been independently tested for various standards and certifications.

Use the quick key (**ANSI** **CSA**) on the following pages to reference product models that meet these standards and certifications.

Use the dots (••) next to each part number to reference which options meet the standards and certifications.

ANSI

• ANSI Z89.1

CSA

• Cert. Mod. - CAN/CSA Z94.1-15

Ridgeline® Cap Style ANSI CSA

- ABS material – strong, yet ultra-light for seemingly weightless protection
- Low profile design – offers a low center of gravity for better balance
- Rear padded suspension – provides additional level of comfort on the wearers' neck
- 4-position harness points allows you to move the harness forward, backward, up or down – allowing for the most optimal position for ultimate comfort
- Replaceable sweat band – padded fabric and polyurethane foam for all day wear
- Vented pressure pad keeps the straps in place providing an additional level of comfort
- Easy to grasp triangle knob adjusts the suspension from 6 1/2 to 8-inch hat sizes
- Swinging hinge points allows you to find the most comfortable position on the back of your head
- Ridgeline cap style hard hats have been tested and pass for reverse orientation
- Ridgeline vented cap style hard hats do not meet the Class E safety standard for industrial head protection
- Custom imprinting available on hard hats



4-Point Ratchet Part No.	Color
HP44110 ●●	White
HP44112 ●●	Gray
HP44113 ●●	Slate Gray
HP44117 ●●	Graphite Pattern
HP44118 ●●	Copper Pattern
HP44120 ●●	Red
HP44130 ●●	Yellow
HP44131 ●●	Hi-Vis Lime*
HP44135 ●●	Green
HP44141 ●●	Hi-Vis Orange*
HP44160 ●●	Blue
HP44162 ●●	Light Blue

Vented 4-Point Ratchet Part No.	Color
HP44110V ●●	White
HP44112V ●●	Gray
HP44120V ●●	Red
HP44130V ●●	Yellow
HP44131V ●●	Hi-Vis Lime*
HP44141V ●●	Hi-Vis Orange*
HP44160V ●●	Blue

6-Point Ratchet Part No.	Color
HP46110 ●	White
HP46120 ●	Red
HP46130 ●	Yellow
HP46131 ●	Hi-Vis Lime*
HP46135 ●	Green
HP46141 ●	Hi-Vis Orange*
HP46160 ●	Blue



HPR441 – 4-point Ratchet Replacement Suspension



HPR461 – 6-point Ratchet Replacement Suspension

ANSI Z89.1 **CSA Z94.1**

Ridgeline non-vented head protection meets ANSI Z89.1 (●), Type 1, Class C, G, and E. Ridgeline vented head protection meets ANSI Z89.1 (●), Type I, and Class C. Some options meet Canadian (CSA Z94.1 - 2015) (●) standards. *Hi-Vis colors have been tested for the "HV" mark. For specific options visit our website or contact your sales representative.



Ridgeline® Full Brim **ANSI**

Shell constructed from ABS materials

Ratchet suspension is easy to adjust and allows the wearer to modify the fit while wearing hard hat

Replaceable suspensions and headbands available

4-point suspension may be converted to 6-point suspension with optional strap (HP6PTSUS)

Custom imprinting available on hard hats

4-Point Ratchet Part No.	Color
HP54110 •	White
HP54111 •	Black
HP54113 •	Slate Gray
HP54117 •	Graphite Pattern
HP54118 •	Copper Pattern
HP54120 •	Red
HP54130 •	Yellow
HP54131 •	Hi-Vis Lime*
HP54135 •	Green
HP54141 •	Hi-Vis Orange*
HP54160 •	Blue
HP54170 •	Hi-Vis Pink



HPR541 – 4-point Ratchet Replacement Suspension



HP6PTSUS – 6-Point Suspension Strap

Ridgeline Bump Caps

Shell constructed from polyethylene materials

For applications where hard hats are not required, but some protection from minor bumps and scalp lacerations are needed

Available with 4-point glide lock suspension

Ventilation holes - keeps your head cool and dry for all day wear

Replaceable sweat band - padded fabric and polyurethane foam for all day wear

Ridgeline bump caps are not designed to meet the safety standards for industrial head protection

Custom imprinting available on bump caps

4-Point Glide Lock Part No.	Color
HP40010	White
HP40011	Black
HP40012	Gray
HP40015	Brown
HP40020	Red
HP40030	Yellow
HP40035	Green
HP40040	Orange
HP40060	Blue



BPRBAND – Bump Cap Sweat Band

SL Series Cap Style **ANSI CSA**

- Low profile design
- Shell constructed from high density polyethylene materials
- Rain trough on sides and back of helmet channel moisture away
- Universal accessory slots fit cap mounted earmuffs and accessories
- Hats also accommodate chin straps
- Snap lock suspension features "tuck away" adjustments for all day, hassle free wear
- Ratchet suspension is easy to adjust and allows the wearer to modify the fit while wearing hard hat
- Cap style is available with 4- and 6-point nylon suspensions – snap lock and ratchet styles
- Replaceable suspensions and headbands available
- SL Series cap style hard hats have been tested and pass for reverse orientation
- Custom imprinting available on hard hats



4-Point Ratchet Part No.	Color
HP14110 ●●	White
HP14111 ●●	Black
HP14112 ●●	Gray
HP14120 ●●	Red
HP14130 ●●	Yellow
HP14131 ●●	Hi-Vis Lime*
HP14135 ●●	Green
HP14140 ●●	Orange
HP14141 ●●	Hi-Vis Orange*
HP14160 ●●	Blue
HP14162 ●●	Light Blue
HP14165 ●●	Dark Blue
HP14170 ●●	Hi-Vis Pink

6-Point Ratchet Part No.	Color
HP16110 ●	White
HP16120 ●	Red
HP16130 ●	Yellow
HP16135 ●	Green
HP16140 ●	Orange
HP16141 ●	Hi-Vis Orange*
HP16160 ●	Blue

4-Point Snap Lock Part No.	Color
HP14010 ●	White
HP14020 ●	Red
HP14030 ●	Yellow
HP14031 ●	Hi-Vis Lime*
HP14035 ●	Green
HP14040 ●	Orange
HP14060 ●	Blue
HP14062 ●	Light Blue

6-Point Snap Lock Part No.	Color
HP16010 ●	White
HP16020 ●	Red
HP16030 ●	Yellow
HP16035 ●	Green
HP16040 ●	Orange
HP16060 ●	Blue



HP141 – 4-point Ratchet Replacement Suspension



HP161 – 6-point Ratchet Replacement Suspension



HHBAND – Universal Replacement Hard Hat Sweat Band



HPTRBAN – Hard Hat Terry Cloth Sweat Band



HPCSTRAP – Chin Strap

ANSI Z89.1 **CSA Z94.1**

All head protection meets ANSI Z89.1 (●), Type 1, Class C, G, and E for industrial head protection standards. Some options meet Canadian CSA Z94.1 - 2015 (●) standards. *Hi-Vis colors have been tested for the "HV" mark. For specific options visit our website or contact your sales representative.



SL Series Full Brim

ANSI CSA

Shell constructed from high density polyethylene materials

Ratchet suspension is easy to adjust and allows the wearer to modify the fit while wearing hard hat

Replaceable suspensions and headbands available

Custom imprinting available on hard hats

4-Point Ratchet Part No.	Color
HP24110 ●●	White
HP24111 ●●	Black
HP24120 ●●	Red
HP24130 ●●	Yellow
HP24131 ●●	Hi-Vis Lime*
HP24135 ●●	Green
HP24140 ●●	Orange
HP24141 ●●	Hi-Vis Orange*
HP24160 ●●	Blue

6-Point Ratchet Part No.	Color
HP26110 ●	White
HP26120 ●	Red
HP26130 ●	Yellow
HP26135 ●	Green
HP26140 ●	Orange
HP26160 ●	Blue



HP241 – 4-point Ratchet Replacement Suspension



HP261 – 6-point Ratchet Replacement Suspension

Full Brim



Cap Style

SL Series Sleek Shell

ANSI

Ideal for linemen

Shell constructed from polyethylene materials

Offers impact and penetration resistance

Ridgeless low profile design

No rain trough – prevents pooling of liquids

Soft brow pad absorbs perspiration

Custom imprinting available on hard hats

Full Brim

4-Point Ratchet Part No.	Color
HPS24110 ●	White
HPS24112 ●	Gray
HPS24160 ●	Blue

Cap Style

4-Point Ratchet Part No.	Color
HPS14110 ●	White



HPSSUS – 4-point Ratchet Replacement Suspension



Baseball Bump Caps

Bump cap and baseball cap in one

Reflective piping adds extra visibility

Soft inner foam cushion for comfortable wear

Size can be adjusted with a hook and loop strap to give a quick, secure fit

Tough polyethylene vented shell is removable and the outer cap is fully washable

Holes in the liner match up with two mesh panels on the cap to provide additional ventilation for coolness and comfort

Ideal for meter readers, food processing, and other industries that don't require full hard hat protection

Baseball bump caps are not designed to meet the safety standards for industrial head protection

Part No.	Color
HP50011	Black
HP50031	Hi-Vis Lime



Ridgeline® Ratchet Headgear **ANSI**

Constructed from durable nylon

Ratchet adjustment for easy fit

Pivoting action allows user to lift face shield while wearing

Adjustable pegs will accommodate a wide variety of face shields

Part No.

HGBR •

PYHGBRHT* •

*Pyramex retail packaged product



Aluminum Cap Style Adapter **ANSI**

Constructed from lightweight aluminum

Fits most cap style hard hats and accommodates a variety of face shields

Part No.

HHAA •



Deluxe Aluminum Cap Style Adapter **ANSI**

Constructed from light weight aluminum

Designed to fit more rounded cap style hard hats

Accommodates a variety of face shields – does not fit S1060

Part No.

HHAD •



Aluminum Full Brim Adapter **ANSI**

Constructed from lightweight aluminum

Fits most full brim hard hats and accommodates a variety of face shields

Part No.

HHAAW •



Cap Style Adapter **ANSI**

Constructed from durable nylon with plastic coated tension spring

Fits most cap style hard hats and accommodates a variety of face shields

Part No.

HHAB •



Dielectric Cap Style Adapter **ANSI**

Dielectric

Constructed from 100% nylon material

Fits most cap style hard hats and accommodates a variety of face shields

Part No.

HHAN •



Dielectric Full Brim Adapter **ANSI**

Dielectric

Constructed from high impact resistant ABS resin

Fits on most full brim hard hats and accommodates a variety of face shields

Part No.

HHABW •

ANSI Z87.1

All face shield hard hat brackets meet ANSI Z87.1 (•) standards. For specific options visit our website or contact your sales representative.



Ridgeline® Cap Style Adapter **ANSI**

Fits Ridgeline cap style hard hats and accommodates a variety of face shield

Dielectric

Hard hat adapters fit into slots of cap style hard hats

Can be used with cap mounted earmuff

Adjustable while using cap mounted earmuff

Hard hat and earmuff sold separately

Part No.

HHABCMR •

SL Series Cap Style Adapter **ANSI**

Fits SL Series cap style hard hats and accommodates a variety of face shields

Dielectric

Hard hat adapters fit into slots of cap style hard hats

Can be used with cap mounted earmuff

Adjustable while using cap mounted earmuff

Hard hat and earmuff sold separately

Part No.

HHABCMS •



Face Shield and Headgear Combo **ANSI**

Aluminum Bound Polycarbonate Face Shield

Meets ANSI Z87+

8" x 15" | .040" thick

Aluminum bound allows shield to bend into preferred shape

Provides 99% UVA/B/C protection

Universal slots

Part No.

HGBRKITCS •

Ridgeline Ratchet Headgear

Constructed from durable nylon

Ratchet adjustment for easy fit

Pivoting action allows user to lift face shield while wearing

Adjustable pegs



Cylinder Polycarbonate Face Shield with slots for Chin Cup **ANSI**

Meets ANSI Z87+

8" x 15.5" | .078" thick

Provides 99% UVA/B/C protection

Universal slots will accommodate a wide variety of headgear

Accessory slots on bottom accommodate CHICUP – sold separately

Part No.

S1210CC •

Chin Protector for S1210CC

8.46" x 2.74" | 0.09" thick

Accommodates S1210CC – sold separately

Part No.

CHICUP





Polyethylene Face Shield **ANSI**

Meets ANSI Z87

8" x 15" | .040" thick

Universal slots will accommodate a wide variety of headgear

Shown with HGBR - sold separately

Part No.

S1010 •

PYS1010R* •

*Pyramex retail packaged product



Aluminum Bound Polyethylene Face Shield **ANSI**

Meets ANSI Z87

8" x 15" | .040" thick

Aluminum bound allows shield to bend into preferred shape

Universal slots will accommodate a wide variety of headgear

Shown with HGBR – sold separately

Part No.

S1015 •



Polycarbonate Face Shield **ANSI**

Meets ANSI Z87+

8" x 15" | .040" thick

Provides 99% UVA/B/C protection

Universal slots will accommodate a wide variety of headgear

Shown with HGBR – sold separately

Part No.

S1020 •



Dark Green Tinted Polyethylene Face Shield **ANSI**

Meets ANSI Z87

8" x 15" | .040" thick

Does not contain IR resin

Universal slots will accommodate a wide variety of headgear

Shown with HGBR – sold separately

Part No.

S1035 •



Aluminum Bound Polycarbonate Face Shield **ANSI**

Meets ANSI Z87+

8" x 15" | .040" thick

Aluminum bound allows shield to bend into preferred shape

Provides 99% UVA/B/C protection

Universal slots will accommodate a wide variety of headgear

Shown with HGBR – sold separately

Part No.

S1040 •



Steel Wire Mesh Face Shield **ANSI**

Meets ANSI Z87.1 standards for wire mesh

8" x 15.5"

Provides good airflow for comfort

Does not accommodate the HHAAD hard hat adapter

Shown with HGBR – sold separately

Part No.

S1060 •

ANSI Z87.1

Meets ANSI Z87.1 (•) standards for face shields – general requirements. Polycarbonate face shields also meet ANSI Z87.1 + high impact requirements. Face shields offer secondary protection and must be worn with spectacles or goggles. For specific options visit our website or contact your sale representative.



Tapered Polycarbonate Face Shield **ANSI**

Meets ANSI Z87+

8" x 15" | .078" thick

Provides 99% UVA/B/C protection

Universal slots will accommodate a wide variety of headgear

Shown with HGBR – sold separately

Part No.

S1110 •



Tapered IR5 Polycarbonate Face Shield **ANSI**

Meets ANSI Z87+

8" x 15.5" | .078" thick

Provides 99% UVA/B/C protection

Universal slots will accommodate a wide variety of headgear

Shown with HGBR – sold separately

Part No.

S1150 •



Cylinder Polycarbonate Face Shield **ANSI**

Meets ANSI Z87+

8" x 15.5" | .078" thick

Provides 99% UVA/B/C protection

Universal slots will accommodate a wide variety of headgear

Shown with HGBR – sold separately

Part No.

S1210 •



Cylinder IR5 Polycarbonate Face Shield **ANSI**

Meets ANSI Z87+

8" x 15.5" | .078" thick

Provides 99% UVA/B/C protection

Universal slots will accommodate a wide variety of headgear

Shown with HGBR – sold separately

Part No.

S1250 •



Headlamp

High power LED headlamp for use in hazardous locations

Rotatable head for vision needs

Waterproof, durable, and impact-resistant construction

Screw fastener for safety precautions

Adjustable strap to fit users' hard hat

High mode (200 lumens) and low mode (100 lumens) functions

Powered with three size AAA alkaline batteries – not included

Hex wrench is included for battery replacement

Shown with Ridgeline® hard hat – sold separately

Part No.

HL100

Intrinsically safe for use in hazardous locations



Class I DIV 1 and 2 GRP ABCD

Class II DIV 1 and 2 GRP EFG

Class III / Temperature Code T4 IP67



New Hire Kits

Intruder® – clear lens [S4110S] or gray lens [S4120S]

Hi-vis workwear – Type R Class 2 vest [RVZ21 series]

SL Series hard hat – white cap style [HP14010] or white full brim [HP24110]

Disposable corded earplugs – NRR 32dB / SNR 36dB [DP1001]

Foam nitrile palm coated gloves



Intruder® meets ANSI Z87.1+, European (EN166), Canadian (CSA Z94.3), and Australian (AS/NZS 1337) standards. All lenses are hard coated polycarbonate scratch-resistant and provide 99% protection from harmful UV rays. Hi-Vis work wear meets ANSI/ISEA 107-2015 standard. SL series hard hats meet ANSI Z89.1, CSA Z94.1 - 2015, Type 1, Class C, G, and E for industrial head protection standards. Disposable corded earplugs meet ANSI S3.19 and CE EN-352:2002 standards. For more information visit our website or contact your sales representative.

SL Series Cap Style Part No.

NHCM	S4110S, RVZ2110M, HP14010, DP1001 and Gloves
NHCL	S4110S, RVZ2110L, HP14010, DP1001 and Gloves
NHCXL	S4110S, RVZ2110XL, HP14010, DP1001 and Gloves
NHCX2	S4110S, RVZ2110X2, HP14010, DP1001 and Gloves
NHGL	S4120S, RVZ2110L, HP14010, DP1001 and Gloves
NHGXL	S4120S, RVZ2110XL, HP14010, DP1001 and Gloves
NHGX2	S4120S, RVZ2110X2, HP14010, DP1001 and Gloves

SL Series Full Brim Part No.

NHFBCL	S4110S, HP24110, DP1001, RVZ2110L and Gloves
NHFBCXL	S4110S, HP24110, DP1001, RVZ2110XL and Gloves
NHFBGL	S4120S, HP24110, DP1001, RVZ2110L and Gloves
NHFBGXL	S4120S, HP24110, DP1001, RVZ2110XL and Gloves

Forestry Kits

Ridgeline® ratchet headgear – [HHABCMR]

Ridgeline® cap style hard hat – white [HP44110] or hi-vis orange [HP44141]

Cap mounted earmuff – NRR 27dB [CM6010]

Face shield – steel wire mesh [S1060]

Part No.

FORKIT10	HP44110, HHABCMR, CM6010 and S1060
FORKIT41	HP44141, HHABCMR, CM6010 and S1060



Ridgeline® headgear meets ANSI Z87.1 standards. Ridgeline® hard hats meet ANSI Z89.1, CSA Z94.1 - 2015, Type 1, Class C, G, and E for industrial head protection standards. Cap mounted earmuff meets ANSI S3.19 standards. Face shield meets ANSI Z87.1 standards for wire mesh. Face shield offers secondary protection and must be worn with spectacles or goggles. For more information visit our website or contact your sales representative.





Welding helmet certifications

Pyramex welding products have been independently tested for various standards and certifications.

Use the quick key (**ANSI** **CSA**) on the following pages to reference product models that meet these standards and certifications.

Use the dots (••) next to each part number to reference which options meet the standards and certifications.

ANSI	• ANSI Z87.1
CSA	• Cert. Mod. - CAN/CSA Z94.3-15

IR eyewear certifications

All Pyramex eyewear products have been independently tested for various standards and certifications.

Use the quick key (**ANSI** **CE** **CSA** **AUS** **BALLISTIC**) on the following pages to reference product models that meet these standards and certifications.

Use the dots (•••••) next to each part number to reference which options meet the standards and certifications.

ANSI	• ANSI Z87.1+ High Impact
CE	• CE EN166
CSA	• Cert. Mod. - CAN/CSA Z94.3-15
AUS	• AS/NZS 1337
BALLISTIC	• MIL-PRF-32432 High velocity Impact Standards

LEADHEAD® AUTO DARKENING HELMETS

WHAD60, WHAM30, and WHAM10 Series

Made of high-impact resistant nylon

Four independent arc sensors in a staggered design to deliver the most reliable arc detection

High speed lens – 1/30000 second

Powered by solar cells and replaceable lithium-battery

Includes magnification lens holder

Material	Sensors	Switching Speed	TIG Rating
High-impact resistant nylon	Four independent in staggered design	1/30000 sec	5 amps and below

Cutting Modes	UV/IR Protection	Power Supply
Welding and grinding	Up to shade DIN16 at all times	Solar cells and replaceable lithium-battery



Auto darkening helmets are supported by the ultra-comfortable headgear.

WHAM30 Series **ANSI** **CSA**



Viewing Area	Shades	Operation Controls
3.858" x 3.425" [98 x 87 mm]	4 / 5-8 / 9-13 Stepless Variable	Manual Internal



Part No.
WHAM3030FL •• Flame

WHAD60 Series **ANSI** **CSA**



Viewing Area	Shades	Operation Controls
3.937" x 2.362" [100 x 60 mm]	4 / 5-13 Digital Display	Digital Internal



Part No.
WHAD6030MB •• Metallic Blue

ANSI Z87.1 **CSA** Z94.3

All welding products meet ANSI Z87.1+ standards and some options meet Canadian [CSA Z94.3-15] standards. For specific lens options visit our website or contact your sales representative.



WHAM10 Series **ANSI CSA**



Viewing Area	Shades	Operation Controls
3.937" x 1.77" (100 x 45 mm)	4 / 9-13 Stepless Variable	Manual External/Internal



Part No.
WHAM1020MB •• Matte Black



Part No.
WHAM3030AE •• American Eagle



Part No.
WHAM3030GB •• Glossy Black



Part No.
WHAM3030FM •• Fire Metal



Part No.
WHAD6030GB •• Glossy Black

WHAD60, WHAM30, and WHAM10 Series Accessories and Replacement Parts

Replacement Headgear Part No.

WHARS1 Headgear – fits WHAM10, WHAM30 and WHAD60

Magnifying Inserts Part No.

WMAG1.5 1.5 magnifying insert – fits all
 WMAG2.0 2.0 magnifying insert – fits all
 WMAG2.5 2.5 magnifying insert – fits all

Replacement Covers Part No.

ROWH10 Front cover plate – WHAM10
 ROWH3060 Front cover plate – WHAM30 and WHAD60
 RIWH10 Inside cover plate – WHAM10
 RIWH30 Inside cover plate – WHAM30
 RIWH60 Inside cover plate – WHAD60
 WRAM10 Auto darkening filter – WHAM10
 WRAM30 Auto darkening filter – WHAM30
 WRAD60 Auto darkening filter – WHAD60



Passive Helmet with IR10 Plate **ANSI CSA**

Lightweight thermoplastic shell provides total head, face and neck protection

Fully adjustable nylon suspension

Lift front with viewing area of 4.25" x 2" (107.95 x 50.8 mm)

Fitted with IR shade #10 welding filter

Optimally balanced "shake down" helmet minimizes carbon monoxide build up

Ample space for respirators

Part No.

WHP100 ••



Lift Front Goggle **ANSI**



Lift front lens

Soft PVC goggle body

Tough, durable ABS lens holder

Elastic strap holds goggle firmly in place

IR shade #5, polycarbonate lens

Indirectly vented to reduce fogging and control the influx of liquids

Part No.

WG100 •

Stationary Lens Goggle **ANSI**



Stationary lens

Soft PVC goggle body

Tough, durable ABS lens holder

Elastic strap holds goggle firmly in place

IR shade #5, polycarbonate lens

Indirectly vented to reduce fogging and control the influx of liquids

Part No.

WG200 •

ANSI Z87.1

CE EN166

CSA Z94.3

AUS NSZ1337

BALLISTIC

All welding products meet ANSI Z87.1+ standards. Some options meet European (EN166), Canadian (CSA Z94.3-15), or Australian (AS/NZS 1337) standards. For specific lens options visit our website or contact your sales representative.



SEE PAGE
53

Capstone® Shield **ANSI CE**

Part No.	Lens and Shield
GG504TSHIELDIR3 ••	AF 3.0 IR Filter H2X
GG504TSHIELDIR5 ••	AF 5.0 IR Filter H2X

Only the goggles for GG504TSHIELDIR3 and GG504TSHIELDIR5 contains IR dye. Due to the nature of the vented holes, the shield is only green tinted and does not contain the IR resin.



SEE PAGE
87

Tapered IR5 Polycarbonate Face Shield **ANSI**

Part No.
S1150 •



SEE PAGE
87

Cylinder IR5 Polycarbonate Face Shield **ANSI**

Part No.
S1250 •

Emerge® ANSI CSA



SEE PAGE
51

Part No.	Black Frame
SB7950SF ●●	5.0 IR Filter
SB7960SF ●●	3.0 IR Filter

Integra® ANSI CE



SEE PAGE
48

Part No.	Black Frame
SB450SF ●●	5.0 IR Filter
SB460SF ●●	3.0 IR Filter

OTS® ANSI



SEE PAGE
44

Part No.	Black Temples
S3550SFJ ●	5.0 IR Filter
S3560SFJ ●	3.0 IR Filter

V2G® ANSI AUS BALLISTIC



SEE PAGE
23

Part No.	Black Frame
GB1850SFT ●●●	AF 5.0 IR Filter H2X
GB1860SFT ●●●	AF 3.0 IR Filter H2X

Venture II® ANSI CE BALLISTIC



SEE PAGE
32

Part No.	Black Frame
SB1850SF ●●●	5.0 IR Filter
SB1860SF ●●●	3.0 IR Filter

Venture 3® ANSI BALLISTIC



SEE PAGE
35

Part No.	Black Frame
SB5750SFT ●●	AF 5.0 IR Filter H2X
SB5760SFT ●●	AF 3.0 IR Filter H2X

ANSI Z87.1 CE EN166 CSA Z94.3 AUS NSZ1337 BALLISTIC

All welding products meet ANSI Z87.1+ standards. Some options meet European (EN166), Canadian (CSA Z94.3-15), or Australian (AS/NZS 1337) standards. For specific lens options visit our website or contact your sales representative.



Onix® Plus **ANSI CE AUS**

Part No.	Black Frame
SB4950STP ●●●	Clear with 5.0 IR H2X
SB4960STP ●●●	Clear with 3.0 IR H2X

SEE PAGE
29



Ztek® **ANSI CE CSA**

Part No.	Lens and Temples
S2514S ●●●	1.5 IR Filter
S2550SF ●	5.0 IR Filter
S2560SF ●	3.0 IR Filter
S25ARCS ●●	Arc

S2514S are designed for peripheral personnel and visitors who are NOT exposed to direct IR radiation

S25ARCS are great for use under the welding helmet – allows welder to see his work clearly without suffering “welders flash burn” from surrounding welders

SEE PAGE
40



Ztek Readers **ANSI**

Part No.	Lens and Temples
S2514R15 ●	1.5 IR Filter +1.5 Mag
S2514R20 ●	1.5 IR Filter +2.0 Mag

SEE PAGE
40





Hearing certifications

Pyramex hearing products have been independently tested for various standards and certifications.

Use the quick key (**ANSI CE**) on the following pages to reference product models that meet these standards and certifications.

Use the dots (••) next to each part number to reference which options meet the standards and certifications.

ANSI

• ANSI S.319

CE

• CE EN - 352:2002



PM9011 Series **ANSI**

NRR 19dB

Smaller band is designed for a slimmer fit

Soft foam ear cups

Fold-away, padded headband

Part No.

PM9011 •



PM9010 Series **ANSI**

NRR 24dB

Low profile design

Soft foam ear cups

Fold-away, padded headband

Part No.

PM9010 •
PM9010P •

Color

Gray
Pink



PM80 Series **ANSI CE**

NRR 26dB / SNR 30dB

Low profile design

Soft foam ear cups

Fold-away, padded headband

Part No.

PM8010 ••
PM8031 ••
PM8041 ••

Color

Gray
Hi-Vis Lime
Hi-Vis Orange

ANSI S3.19

CE EN352:02

All hearing protection meets ANSI S3.19 standards (•). Some options meet European [CE EN-352:2002] (••) standards. For more information visit our website or contact your sales representative.



PM3010 Series **ANSI CE**

NRR 26dB / SNR 28dB

Adjustable to fit all sizes

Soft foam ear cups

Fold-away, padded headband

Part No.

PM3010 ••



PM2010 Series **ANSI**

NRR 22dB

Dielectric

Lightweight and comfortable

Durable nylon headband

Part No.

PM2010 •

PYPM2010* •

*Pyramex retail packaged product



PM1010 Series **ANSI**

NRR 25dB

Dielectric

Large soft foam ear cups

Durable padded nylon headband

Part No.

PM1010 •



CM6010 Series **ANSI**

NRR 27dB

Cap mounted earmuff – fits a wide variety of hard hats

Dielectric

Soft foam ear cups

Easily accessible while working

Flip down over ears to use or flip up when not in use

Part No.

CM6010 •





RPD3001 Series **ANSI**

**Metal Detectable Reusable
Corded Earplugs**

NRR 24dB

Corded earplugs are embedded with an iron ball for metal and magnetic detectability

Three flexible rubber flanges form a cozy seal for all size ear canals

Part No.

RPD3001 •



RPD2001 Series **ANSI**

**Metal Detectable Reusable
Corded Earplugs**

NRR 27dB

Reusable corded earplugs are embedded with an iron ball for metal and magnetic detectability

Earplugs are constructed around a pocket of air for lightweight comfort

Three rubber flanges form a cozy seal for all size ear canals

Part No.

RPD2001 •



DPD1001 Series **ANSI**

**Metal Detectable Disposable
Corded Earplugs**

NRR 32dB

Disposable corded earplugs are embedded with an iron ball for metal and magnetic detectability

Soft foam earplugs gently expand and self adjust to all size ear canals

Part No.

DPD1001 •



RP3001 Series **ANSI CE**

Reusable Corded Earplugs

NRR 24dB / SNR 30dB

Three flexible rubber flanges form a cozy seal for all size ear canals

Part No.

RP3001 ••



RP2001 Series **ANSI CE**

Reusable Corded Earplugs

NRR 27dB / SNR 26dB

Earplugs are constructed around a pocket of air for lightweight comfort

Three rubber flanges form a cozy seal for all size ear canals

Part No.

RP2001 ••

PYRP2001* ••

*Pyramex retail packaged product



DP1001 Series **ANSI CE**

Disposable Corded Earplugs

NRR 32dB / SNR 36dB

Soft foam earplugs gently expand and self adjust to all size ear canals

Part No.

DP1001 ••

ANSI S3.19

CE EN352:02

All hearing protection meets ANSI S3.19 standards (•). Some options meet European [CE EN-352:2002] (•) standards. For more information visit our website or contact your sales representative.



Earplug Clip

Black plastic clips secure corded earplugs to spectacle and also act as a lanyard

Part No.

EPC12



ANSI CE

DP1000 Series

Disposable Uncorded Earplugs

NRR 32dB / SNR 36dB

Soft foam earplugs gently expand and self adjust to all size ear canals

Part No.

DP1000 ●●

PYDP1000* ●●

*Pyramex retail packaged product



PD500 Series

Earplug Dispenser

Convenient dispenser holds 500 pair of disposable earplugs

Quick and easy use for workers

Durable plastic design has easy twist knob and catch basin to prevent plugs from falling to the ground

Can be wall mounted or use a freestanding display

ANSI CE

Disposable Uncorded Earplugs

NRR 32dB / SNR 36dB

Soft foam earplugs gently expand and self adjust to all size ear canals

500 pair of disposable earplugs are included with earplug dispenser

Part No.

PD500 Earplug Dispenser

PD500R ●● 500 Pair of Replacement Plugs



BP1000 Series **ANSI**

Round Banded Earplugs

NRR 18dB

Flexible band keeps earplugs in place and easy to find

Round earplugs are ideal for all-day wear

Replacement plugs are included

Part No.

BP1000 • Round Banded Earplugs



BP2000 Series **ANSI CE**

Conical Banded Earplugs

NRR 22dB / SNR 21dB

Flexible band keeps earplugs in place and easy to find

Conical shape earplugs for superior comfort and fit

Replacement plugs are included

Part No.

BP2000 • Conical Banded Earplugs



RP4000 Series **ANSI**

Reusable Push-in Uncorded Earplugs

NRR 25dB

Stem eliminates earplug contact with fingers

Three flexible rubber flanges form a cozy seal for all size ear canals

Part No.

RP4000 •



DP3000 Series **ANSI**

Disposable Push-in Uncorded Earplugs

NRR 30dB

No earplug roll down required

Stem eliminates earplug contact with fingers

Soft foam earplugs gently expand and self adjust to all size ear canals

Part No.

DP3000 •

ANSI S3.19 **CE EN352:02**

All hearing protection meets ANSI S3.19 standards (•). Some options meet European [CE EN-352:2002] (•) standards. For more information visit our website or contact your sales representative.



VG80 Series **ANSI**

NRR 26dB

Low profile design

Soft foam ear cups

Fold-away, padded headband

Box Part No.	Clamshell Part No.	Color
VGPM8010B •	VGPM8010C •	Gray
VGPM8010PB •	VGPM8010PC •	Pink
VGPM8015B •	VGPM8015C •	Graphite Pattern
VGPM8031B •	VGPM8031C •	Hi-Vis Lime
VGPM8065B •	VGPM8065C •	Purple

HEARING

Clandestine **ANSI**

Electronic Earmuff

NRR 24dB

Slim profile ear cups

Adjustable ultra-comfort headband

Omni directional microphone

2 AAA batteries are included

Part No.

VGPM10 •



HD
CLEAR SOUND
SPEAKERS



RAPID
NOISE
SUPPRESSION



VG90 Series **ANSI**

NRR 24dB

Low profile design

Soft foam ear cups

Fold-away, padded headband

Box Part No.	Clamshell Part No.	Color
VGPM9010B •	VGPM9010C •	Gray
VGPM9010PB •	VGPM9010PC •	Pink



VG90 Youth Series

ANSI

NRR 19dB

Smaller band is designed for a slimmer fit

Soft foam ear cups

Fold-away, padded headband

Box Part No.	Clamshell Part No.
VGPM9011B •	VGPM9011C •



DU80 Series **ANSI**

NRR 26dB

Low Profile Design

Soft foam ear cups

Fold-away, padded headband

Part No.	Color
DUPM8010 •	Gray
DUPM8010P •	Pink



PYVLCOMBO Kit **ANSI**

Eye Protection:

Straight temples

Integrated nosepiece

Hearing Protection:

NRR 22dB

Dielectric

Lightweight and comfortable

Durable nylon headband

Part No.	Lens Color
PYVLCOMBO	Clear

Eye protection meets ANSI Z87.1 standards. All lenses are hard coated polycarbonate scratch-resistant and provide 99% protection from harmful UV rays.

Hearing protection meets ANSI S3.19 standards.

For more information visit our website or contact your sales representative.



ANSI S3.19

CE EN352:02

All hearing protection meets ANSI S3.19 standards (•). Some options meet European [CE EN-352:2002] (•) standards. For more information visit our website or contact your sales representative.



PYS25 Kit ANSI CE CSA

Eye protection meets ANSI Z87.1+, European (EN166), and Canadian (CSA Z94.3) standards. All lenses are hard coated polycarbonate scratch-resistant and provide 99% protection from harmful UV rays. Hearing protection meets ANSI S3.19 and CE EN-352:2002 standards. For more information visit our website or contact your sales representative.

Eye Protection:

Integrated nosepiece

Soft, non-slip rubber temple tips provide non-binding fit

Hearing Protection:

Disposable Uncorded Earplugs

NRR 32dB / SNR 36dB

Soft foam earplugs gently expand and self adjust to all size ear canals

Ztek Part No.	Lens Color
PYS2510SDP	Clear
PYS2530SDP	Amber

Mini Ztek Part No.	Lens Color
PYS2510SNDP	Clear
PYS2517SNDP	Pink
PYS2530SNDP	Amber



Ever-Lite® Range Kit

ANSI CSA

Eye protection meets ANSI Z87.1+ and Canadian (CSA Z94.3) standards. All lenses are hard coated polycarbonate scratch-resistant and provide 99% protection from harmful UV rays. Hearing protection meets ANSI S3.19 standards. For more information visit our website or contact your sales representative.

Eye Protection:

Soft nosepiece for snug fit

Semi-frame and slim co-injected temple design for lightweight spectacle – 22 gm

Hearing Protection:

NRR 26dB / SNR 30dB

Low profile design earmuff

Soft foam ear cups

Fold-away, padded headband

Part No.	Lens Color	Muff Color
VGCOMB08610	Clear	Gray
VGCOMB08617	Pink	Pink
VGCOMB08630	Amber	Gray



Shooting Kits ANSI CSA

Eye protection meets ANSI Z87.1+ and Canadian (CSA Z94.3) standards. All lenses are hard coated polycarbonate scratch-resistant and provide 99% protection from harmful UV rays. Hearing protection meets ANSI S3.19 standards. For more information visit our website or contact your sales representative.

Eye Protection:

Ventilated nosepiece is soft and adjustable

Top of frame is ventilated allowing air to circulate

Soft dual-injected rubber temple tips combined with fully adjustable straight back temples reinforce the highest level of comfort and fit

Hearing Protection:

NRR 26dB

Low profile design earmuff

Soft foam ear cups

Fold-away, padded headband

Part No.	Lens Color	Muff Color
DUCOMB05710	Clear	Gray
DUCOMB05740	Orange	Gray



Glove certifications

Pyramex work gloves have been independently tested for various standards and certifications.

USA Standards: ANSI/ISEA 105-2016

[American National Standard for Hand Protection Classification]



Cut Ratings are given from A1 through to A9 with A9 being the maximum cut rating.

European Standards: EN388:2003

[Protective gloves against mechanical risks]



EN388
2121



Cat.II

Abrasion	Circular blade cut	Tear	Puncture
Rated	Rated	Rated	Rated
1 - 4	1 - 5	1 - 4	1 - 4

Use the dots (•) next to each part number to reference which options meet the standards and certifications.

ANSI

• ANSI/ISEA 105-2016

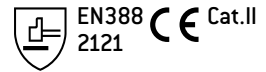
CE

• EN388:2003



GL101 Series

Material Handling — Light Duty



2 layer stretch Spandex for comfort and breathability

Touch screen function on 2 fingers and thumb

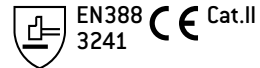
Each pair of gloves is attached to a Pyramex hangtag

Part No.	Sizes
GL101 •	S, M, L, XL, 2XL



GL102 Series

Trade — Medium Duty



2 layer stretch Spandex plus mesh fabric on back for comfort and breathability

Touch screen function on 2 fingers and thumb

Silicone patch on palm for anti-slip and better grip

Thicker embossed neoprene on knuckle for added protection

Synthetic leather patches on palm for added protection and comfort

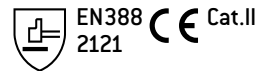
Each pair of gloves is attached to a Pyramex hangtag

Part No.	Sizes
GL102 •	S, M, L, XL, 2XL



GL201 Series

Impact — Heavy Duty



2 layer stretch Spandex on back for added comfort

TPR on 3 fingers for impact protection

EVA on index finger back for anti-shock protection

PVC patches with EVA padding on palm for good abrasion and vibration resistance

Soft terry cloth on the back of the thumb for brow-wiping

Each pair of gloves is attached to a Pyramex hangtag

Part No.	Sizes
GL201 •	S, M, L, XL, 2XL

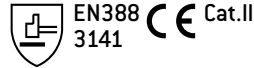
ANSI 105 CE EN388

All work gloves have been tested to European [EN388] [•] standards. Cut resistant gloves have been tested to ANSI/ISEA 105-2016 [•].



GL801 Series

Ultra Impact — Maximum Duty



TPR impact protection on back of fingers and knuckles

2 layer stretch Spandex on back for added comfort

Rough PVC palm for high abrasion protection and good grip

High visibility colors

Longer neoprene cuff to cover shirt/coverall cuffs

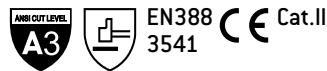
Each pair of gloves is attached to a Pyramex hangtag



Part No.	Sizes
GL801 •	S, M, L, XL, 2XL

GL802CR Series

Ultra Impact — Maximum Duty
Cut Resistant



TPR impact protection on back of fingers and knuckles

2 layer stretch Spandex on back for added comfort

Rough PVC palm for high abrasion protection and good grip

High visibility colors

Longer neoprene cuff to cover shirt/coverall cuffs

Full cut resistant inner lining for outstanding cut protection and dexterity

Each pair of gloves is attached to a Pyramex hangtag



Part No.	Sizes
GL802CR ••	S, M, L, XL, 2XL

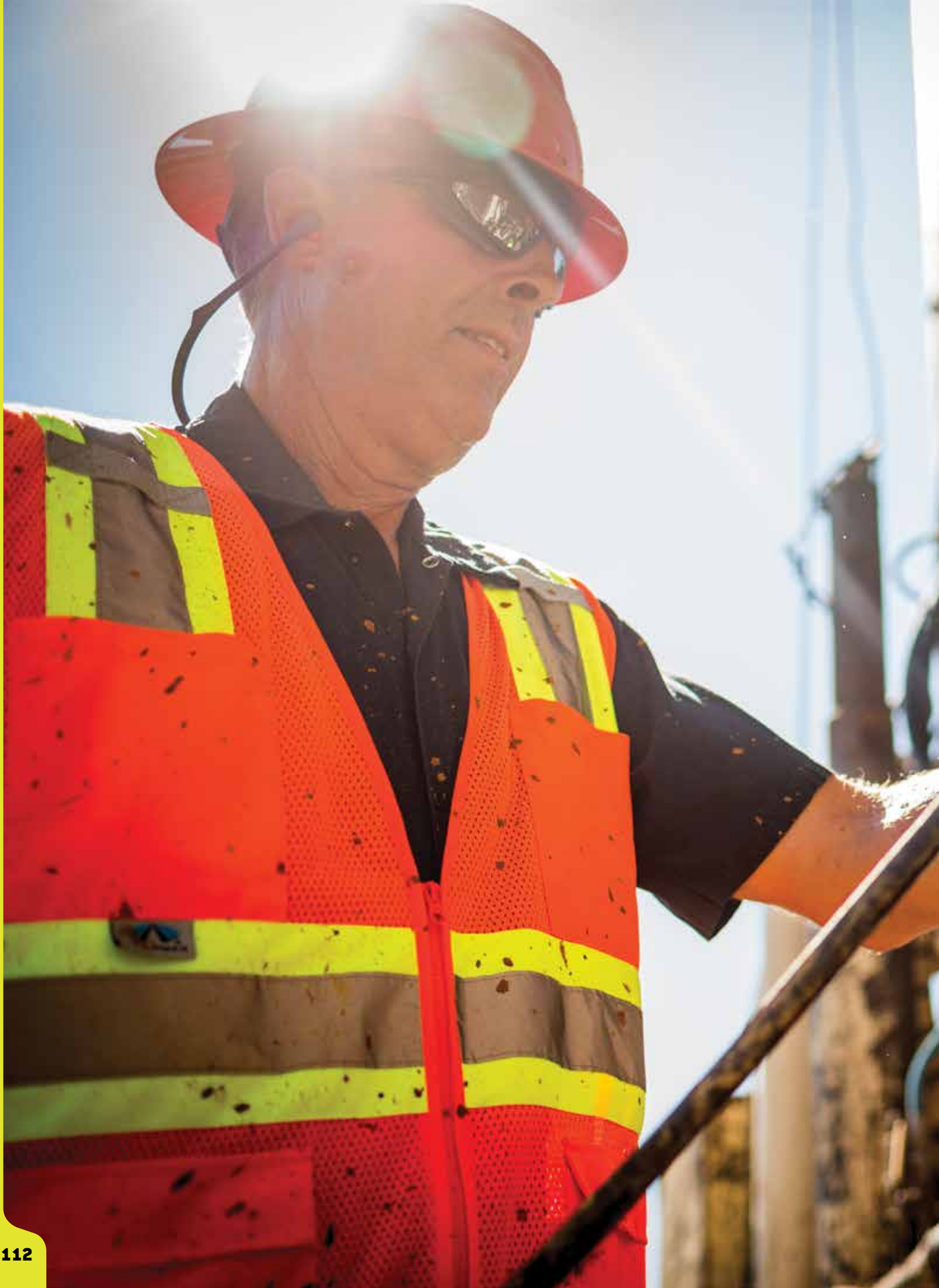
Glove Clip

Keeps gloves handy by clipping to your belt loop or tool belt

Breakaway feature for safety

Part No.
GLC100







Hi-Vis work wear features

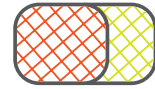
Pyramex has an extensive line of Hi-Vis work wear. Use the icons below to quickly find some of the most requested features for safety vests, shirts, and jackets.



Hi-Vis
Solid Material



Hi-Vis Solid/
Mesh Material



Hi-Vis
Mesh Material



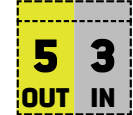
Zipper



Metal
Snap



POCKETS



Hi-Vis work wear certifications

All Pyramex Hi-Vis work wear products have been independently tested for various standards and certifications.

Use the quick key (**ANSI** **CSA**) on the following pages to reference product models that meet these standards and certifications.

Use the dots (••) next to each part number to reference which options meet the standards and certifications.

ANSI

• ANSI/ISEA 107-2015

CSA

• CSA Z96-15



RVZ21 Series

Type R - Class 2

POCKETS
1 1
OUT IN



- Hi-Vis lightweight polyester mesh material
- 2" silver reflective material
- Zipper front closure
- Chest pocket with hook and loop closure
- Deep and wide inside pocket

Part No.	Color	Sizes
RVZ2110 •	Lime	S, M, L, XL, 2XL, 3XL,
RVZ2120 •	Orange	4XL, 5XL

RVZ22 Series

Type R - Class 2

POCKETS
1 1
OUT IN



- Hi-Vis lightweight polyester mesh material
- 2" silver reflective material with 4" contrasting color trim
- Zipper front closure
- Chest pocket with hook and loop closure
- Deep and wide inside pocket

Part No.	Color	Sizes
RVZ2210 •	Lime	M, L, XL, 2XL, 3XL,
RVZ2220 •	Orange	4XL, 5XL

RVZ23 Series

Type R - Class 2

POCKETS
4 2
OUT IN



- Hi-Vis lightweight polyester mesh material
- 2" silver reflective material with 4" contrasting color trim
- Zipper front closure
- 6 pockets: 4 outside, 2 inside
- Mic tabs

Part No.	Color	Sizes
RVZ2310 •	Lime	M, L, XL, 2XL, 3XL,
RVZ2320 •	Orange	4XL, 5XL

All Hi-Vis work wear meets ANSI/ISEA 107-2015 standards (●).

RVZ24 Series

Type R - Class 2



Hi-Vis lightweight polyester solid material on front, mesh material on back

2" silver reflective material with 4" contrasting color trim

Zipper front closure

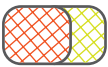
8 pockets: 5 outside, 3 inside

Mic tabs

Part No.	Color	Sizes
RVZ2410 •	Lime	S, M, L, XL, 2XL, 3XL, 4XL, 5XL
RVZ2420 •	Orange	4XL, 5XL

RVHL25 Series

Type R - Class 2



Hi-Vis lightweight polyester mesh material

2" silver reflective material

Breakaway hook and loop shoulders, sides, and front closure

Chest pocket with hook and loop closure

Deep and wide inside pocket

Reinforced D-ring slot

Part No.	Color	Sizes
RVHL2510BRD •	Lime	M, L, XL, 2XL, 3XL, 4XL, 5XL
RVHL2520BRD •	Orange	4XL, 5XL

RVZ26 Series

Type R - Class 2



Hi-Vis lightweight polyester mesh material
2" silver reflective material

Zipper front closure

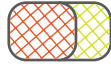
Chest pocket with hook and loop closure

Deep and wide inside pocket

Part No.	Color	Sizes
RVZ2610 •	Lime	M, L, XL, 2XL, 3XL, 4XL, 5XL
RVZ2620 •	Orange	4XL, 5XL

RVHL27 Series

Type R - Class 2



Hi-Vis lightweight polyester mesh material
2" silver reflective material with 4" contrasting color trim

Breakaway hook and loop shoulders, sides, and front closure

Clear chest pocket for badges with hook and loop closure

Deep and wide inside pocket

Part No.	Color	Sizes
RVHL2710BR •	Lime	M, L, XL, 2XL, 3XL, 4XL, 5XL
RVHL2720BR •	Orange	4XL, 5XL

RVMS28 Series

Type R - Class 2



Hi-Vis lightweight polyester solid material with black trim

2" silver reflective material

Metal snap front closure

Metal grommets on upper front collar trim

8 pockets: 5 outside, 3 inside

Reach through pocket on back with zipper closures

Mic tabs

Part No.	Color	Sizes
RVMS2810 •	Lime	M, L, XL, 2XL, 3XL
RVMS2820 •	Orange	M, L, XL, 2XL, 3XL

RVZ31 Series

Type R - Class 3



Hi-Vis lightweight polyester mesh material
2" silver reflective material

Zipper front closure

7 pockets: 3 outside, 4 inside

Part No.	Color	Sizes
RVZ3110 •	Lime	M, L, XL, 2XL, 3XL, 4XL, 5XL
RVZ3120 •	Orange	4XL, 5XL



RCZ21 Series

Type R - Class 2

POCKETS

1	1
OUT	IN



- Hi-Vis lightweight polyester mesh material
- 2" silver reflective material
- Zipper front closure
- Chest pocket with hook and loop closure
- Deep and wide inside pocket

Part No.	Color	Sizes
RCZ2110 ●●	Lime	M, L, XL, 2XL, 3XL,
RCZ2120 ●●	Orange	4XL, 5XL

RCZ24 Series

Type R - Class 2

POCKETS

5	3
OUT	IN



- Hi-Vis lightweight polyester solid material on front, mesh material on back
- 2" silver reflective material with 4" contrasting color trim
- Zipper front closure
- 8 pockets: 5 outside, 3 inside
- Mic tabs

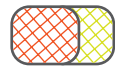
Part No.	Color	Sizes
RCZ2410 ●●	Lime	M, L, XL, 2XL, 3XL,
RCZ2420 ●●	Orange	4XL, 5XL

RCA25 Series

Type R - Class 2

POCKETS

1	2
OUT	IN



- Hi-Vis lightweight polyester mesh material
- 2" silver reflective material
- Breakaway hook and loop shoulders, sides and front closure
- Adjustable waist band
- 3 pockets: 1 outside, 2 inside
- Outside chest pocket with hook and loop closure
- Deep and wide inside pockets
- Reinforced D-ring slot

Part No.	Color	Sizes
RCA2510M ●●	Lime	Medium adjusts to XL
RCA2510X2 ●●	Lime	2XL adjusts to 5XL
RCA2520M ●●	Orange	Medium adjusts to XL
RCA2520X2 ●●	Orange	2XL adjusts to 5XL

All Hi-Vis work wear meets ANSI/ISEA 107-2015 (●) standards. Some options meet CSA Z96-15 (●) standards.

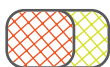


RCA27 Series

Type R - Class 2

POCKETS

1 2
OUT IN



Hi-Vis lightweight polyester mesh material

2" silver reflective material with 4" contrasting color trim

Adjustable waist band

Breakaway hook and loop shoulders, sides and front closure

3 pockets: 1 outside, 2 inside

Outside chest pocket with hook and loop closure

Deep and wide inside pockets

Reinforced D-ring slot

Part No.	Color	Sizes
RCA2710M ●●	Lime	Medium adjusts to XL
RCA2710X2 ●●	Lime	2XL adjusts to 5XL
RCA2720M ●●	Orange	Medium adjusts to XL
RCA2720X2 ●●	Orange	2XL adjusts to 5XL

RCMS28 Series

Type R - Class 2

POCKETS

10 4
OUT IN



Hi-Vis solid polyester

2" 3M® reflective material with 4" contrasting color trim

Metal snap front closure

Metal grommets on upper front collar trim

14 pockets: 10 outside, 4 inside

Reach through pocket on back with zipper closures

Flashlight pocket

Mic tabs

Reinforced D-ring slot

Part No.	Color	Sizes
RCMS2810 ●●	Lime	M, L, XL, 2XL, 3XL, 4XL, 5XL

RCTS21 Series

Type R - Class 2

POCKETS

1 0
OUT IN



Hi-Vis lightweight polyester moisture wicking t-shirt

2" silver reflective material with 4" contrasting color trim

Chest pocket

Part No.	Color	Sizes
RCTS2110 ●●	Lime	M, L, XL, 2XL, 3XL, 4XL, 5XL



RVZ21SE Series

Type R - Class 2 - Non FR

POCKETS

1	1
OUT	IN



Hi-Vis self-extinguishing lightweight polyester mesh material

2" silver reflective material

Zipper front closure

Chest pocket with hook and loop closure

Deep and wide inside pocket

Part No.	Color	Sizes
RVZ2110SE •	Lime	M, L, XL, 2XL, 3XL,
RVZ2120SE •	Orange	4XL, 5XL

RVZ22SE Series

Type R - Class 2 - Non FR

POCKETS

1	1
OUT	IN



Hi-Vis self-extinguishing lightweight polyester mesh material

2" silver reflective material with 4" contrasting color trim

Zipper front closure

Chest pocket with hook and loop closure

Deep and wide inside pocket

Part No.	Color	Sizes
RVZ2210SE •	Lime	M, L, XL, 2XL, 3XL,
RVZ2220SE •	Orange	4XL, 5XL

RVZ24SE Series

Type R - Class 2 - Non FR

POCKETS

5	3
OUT	IN



Hi-Vis self-extinguishing lightweight polyester solid front and mesh back material

2" silver reflective material with 4" contrasting color trim

Zipper front closure

8 pockets: 5 outside, 3 inside

Mic tabs

Part No.	Color	Sizes
RVZ2410SE •	Lime	M, L, XL, 2XL, 3XL,
RVZ2420SE •	Orange	4XL, 5XL

All Hi-Vis self-extinguishing work wear meets ANSI/ISEA 107-2015 (●) standards. Some options meets CSA Z96-15 (●) standards.

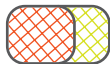


RCA25SE Series

Type R - Class 2 - Non FR

POCKETS

1 2
OUT IN



Hi-Vis self-extinguishing lightweight polyester mesh material

2" silver reflective material

Breakaway hook and loop shoulders, sides and front closure

Adjustable waist band

3 pockets: 1 outside, 2 inside

Outside chest pocket with hook and loop closure

Deep and wide inside pockets

Reinforced D-ring slot

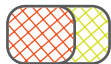
Part No.	Color	Sizes
RCA2510SEM ●●	Lime	Medium adjusts to XL
RCA2510SEX2 ●●	Lime	2XL adjusts to 5XL
RCA2520SEM ●●	Orange	Medium adjusts to XL
RCA2520SEX2 ●●	Orange	2XL adjusts to 5XL

RCA27SE Series

Type R - Class 2 - Non FR

POCKETS

1 2
OUT IN



Hi-Vis self-extinguishing lightweight polyester mesh material

2" silver reflective material with 4" contrasting color trim

Breakaway hook and loop shoulders, sides and front closure

Adjustable waist band

3 pockets: 1 outside, 2 inside

Outside chest pocket with hook and loop closure

Deep and wide inside pockets

Reinforced D-ring slot

Part No.	Color	Sizes
RCA2710SEM ●●	Lime	Medium adjusts to XL
RCA2710SEX2 ●●	Lime	2XL adjusts to 5XL
RCA2720SEM ●●	Orange	Medium adjusts to XL
RCA2720SEX2 ●●	Orange	2XL adjusts to 5XL

RCMS28SE Series

Type R - Class 2 - Non FR

POCKETS

10 4
OUT IN



Hi-Vis self-extinguishing solid polyester

2" 3M® reflective material with 4" contrasting color trim

Metal snap front closure

Metal grommets on upper front collar trim

14 pockets: 10 outside, 4 inside

Reach through pocket on back with zipper closures

Flashlight pocket

Mic tabs

Reinforced D-ring slot

Part No.	Color	Sizes
RCMS2810SE ●●	Lime	M, L, XL, 2XL, 3XL, 4XL, 5XL



RJ31 Series

Type R - Class 3

POCKETS	
5	4
OUT	IN

RJ32 Series

Type R - Class 3

POCKETS	
4	1
OUT	IN



Weatherproof polyester shell with zip out polar fleece liner

Weatherproof elastic band at the waist and wrists

2" silver reflective material

Concealed detachable hood

Zipper front closure

9 pockets: 5 outside, 4 inside

Cell phone/radio chest pocket with clear panel on outside shell

Mic tabs and pencil pocket

Part No.	Color	Sizes
RJ3110 •	Lime	M, L, XL, 2XL, 3XL, 4XL, 5XL



Weatherproof polyester shell with quilted lining

Weatherproof elastic band at the waist and wrists

2" silver reflective material

Concealed hood

Zipper front closure

5 pockets: 4 outside, 1 inside

Cell phone/radio chest pocket with clear panel on outside shell

Mic tabs and pencil pocket

Part No.	Color	Sizes
RJ3210 •	Lime	M, L, XL, 2XL, 3XL, 4XL, 5XL

All Hi-Vis work wear meets ANSI/ISEA 107-2015 standards (•).



RSSH32 Series

Type R - Class 3

POCKETS	
1	0
OUT	IN



- 100% polyester 280g/m2 fleece
- Elastic knit at wrists and waist
- 2" silver reflective material
- Pull over type sweat shirt with hood
- Mesh lined hood with adjustable pull cord
- 1 large front pocket

Part No.	Color	Sizes
RSSH3210 •	Lime	M, L, XL, 2XL, 3XL, 4XL, 5XL

RSZH32 Series

Type R - Class 3

POCKETS	
2	0
OUT	IN



- 100% polyester 280 g/m2 fleece
- Elastic knit at wrists and waist
- 2" silver reflective material
- Zipper front closure
- Mesh lined hood with adjustable pull cord
- 2 outside pockets

Part No.	Color	Sizes
RSZH3210 •	Lime	M, L, XL, 2XL, 3XL, 4XL, 5XL

RLTS31 Series

Type R - Class 3



Hi-Vis lightweight polyester moisture wicking long sleeves t-shirt

2" silver reflective material

Chest pocket

Part No.	Color	Sizes
RLTS3110 •	Lime	M, L, XL, 2XL, 3XL, 4XL, 5XL

RLTS31B Series

Type R - Class 3



Hi-Vis lightweight polyester moisture wicking long sleeves t-shirt with black bottom

2" silver reflective material

Chest pocket

Part No.	Color	Sizes
RLTS3110B •	Lime	M, L, XL, 2XL, 3XL, 4XL, 5XL
RLTS3120B •	Orange	M, L, XL, 2XL, 3XL, 4XL, 5XL

RTS21 Series

Type R - Class 2



Hi-Vis lightweight polyester moisture wicking t-shirt

2" silver reflective material

Chest pocket

Part No.	Color	Sizes
RTS2110 •	Lime	M, L, XL, 2XL, 3XL, 4XL, 5XL
RTS2120 •	Orange	M, L, XL, 2XL, 3XL, 4XL, 5XL

RTS21B Series

Type R - Class 2



Hi-Vis lightweight polyester moisture wicking t-shirt with black bottom

2" silver reflective material

Chest pocket

Part No.	Color	Sizes
RTS2110B •	Lime	M, L, XL, 2XL, 3XL, 4XL-5XL

RTS21NP Series

Type R - Class 2



Hi-Vis lightweight polyester moisture wicking t-shirt

2" silver reflective material

Part No.	Color	Sizes
RTS2110NP •	Lime	M, L, XL, 2XL, 3XL, 4XL, 5XL

RTS23 Series

Type R - Class 2



Hi-Vis lightweight polyester moisture wicking t-shirt with black side panels

2" heat sealed broken pattern silver reflective material

Chest pocket

Part No.	Color	Sizes
RTS2310 •	Lime	M, L, XL, 2XL, 3XL, 4XL

Most Hi-Vis work wear meets ANSI/ISEA 107-2015 standards (●).



RTS21NS Series

Non-Rated



Hi-Vis lightweight polyester moisture wicking t-shirt

Chest pocket

Part No.	Color	Sizes
RTS2110NS	Lime	M, L, XL, 2XL, 3XL, 4XL, 5XL

RLTS31NS Series

Non-Rated



Hi-Vis lightweight polyester moisture wicking long sleeves t-shirt

Chest pocket

Part No.	Color	Sizes
RLTS3110NS	Lime	M, L, XL, 2XL, 3XL, 4XL, 5XL

RH1 Series

Non-Rated



100% acrylic knit cap

Reflective stripe

Part No.	Color	Sizes
RH110	Lime	One size fits most
RH120	Orange	

RV1 Series

Non-Rated



Hi-Vis lightweight polyester mesh material

1" vinyl reflective material

Hook and loop front closure

Elastic side straps

Part No.	Color	Sizes
RV110	Lime	One size fits most
PYRV110*	Lime	
RV120	Orange	
PYRV120*	Orange	

*Pyramex retail packaged product

RV1NS Series

Non-Rated



Hi-Vis lightweight polyester mesh material

Hook and loop front closure

Elastic side straps

Part No.	Color	Sizes
RV110NS	Lime	One size fits most
RV120NS	Orange	



HI-VIS





CO-15071



PYRAMEX

R# 104569

SERVILE TENNESSEE

IN CHINA



BBS400 Series

Standard Hi-Vis Back Support – Light Weight

All elastic 8-inch body for extra firm support

Stretchable bias binding with zig-zag stitching

Hi-Vis spandex elastic with neoprene body

Breathable mesh on the lumbar pad position

Non-conductive polypropylene stays with anti-slip elastic

Adjustable, detachable suspenders

Washable and shrink resistant

Part No.	Sizes
BBS400	S, M, L, XL, 2XL, 3XL



BBS500 Series

High Performance Back Support

All elastic 9-inch body for extra firm support

Stretchable bias binding with zig-zag stitching

Adjustable suspenders with innovative buckle panel

Ventilated, durable elastic body with two hook and loop fastening compression straps

Washable and shrink resistant

Part No.	Sizes
BBS500	S, M, L, XL, 2XL, 3XL



BBS300 Series

General Use Back Support – Light Weight

All elastic 8-inch body for extra firm support

Stretchable bias binding with zig-zag stitching

Economical spandex elastic body

Breathable mesh on the lumbar pad position

Non-conductive polypropylene stays

Adjustable, detachable suspenders with wide hook and loop fabric

Washable and shrink resistant

Part No.	Sizes
BBS300	S, M, L, XL, 2XL, 3XL



BBS200 Series

Standard Weight Lifter Style Back Support Belt

All elastic 8-inch body for extra firm support

Stretchable bias binding with zig-zag stitching

Rigid EVA foam composition

Durable 600D foam laminated nylon body fabric

Breathable mesh and anti-slip elastic on the lumbar pad position

Adjustable webbed straps with hook and loop closure

Washable and shrink resistant

Part No.	Sizes
BBS200	S, M, L, XL, 2XL, 3XL



BBS100 Series

General Use Back Support – Economy Weight

Constructed from lightweight, durable material

Plastic support stays

Features breakaway suspenders

2 overlap style adjustable panels

Contoured shape allows flexibility and complete freedom of movement

Stabilizes the spine, supports the abdomen and lower back to prompt proper lifting

Washable and shrink resistant

Part No.	Sizes
BBS100	S, M, L, XL, 2XL, 3XL



BWS500 Series

Wrist Wrap with Thumb Restrainer

Ambidextrous, neoprene four-way stretch fabric provides uniform support and warmth

Straps are made from durable woven elastic for support and comfort

Hook and loop closure

Washable and shrink resistant

Part No.	Sizes
BWS500	S, M, L, XL

BWS200 Series

Wrist Wrap with Thumb Loop

Provides support for your wrist with a thumb loop for easy/quick wrap

Durable woven elastic for support and comfort

Hook and loop closure

Washable and shrink resistant

Part No.	Sizes
BWS200M	Small adjust to Medium
BWS200L	Large adjust to XL

BWS100 Series

Wrist Wrap – Universal Size

Durable woven elastic for support and comfort

Hook and loop closure

Washable and shrink resistant

Part No.	Sizes
BWS100	One size fits most



BES500 Series

Ambidextrous Elbow Sleeve with Strap

Buckle with hook and loop closure and adjustable cinch strap

Neoprene four-way stretch fabric provides uniform support and warmth

Binding and pre-curve design with spandex mesh behind the elbow

Washable and shrink resistant

Part No.	Sizes
BES500	S, M, L, XL, 2XL

BES200 Series

Ambidextrous Elbow Sleeve

Neoprene four-way stretch fabric provides uniform support and warmth

Binding and pre-curve design with spandex mesh behind the elbow

Washable and shrink resistant

Part No.	Sizes
BES200	S, M, L, XL, 2XL



BKS500 Series

Ambidextrous Knee Sleeve with Open Patella and Straps

Neoprene four-way stretch fabric provides uniform support and warmth

Contoured design conforms to the leg's natural shape

Foam anterior pad

Straps are made from durable woven elastic for support and comfort

Two hook and loop closures

Washable and shrink resistant

Part No.	Sizes
BKS500	S, M, L, XL, 2XL

BKS200 Series

Ambidextrous Knee Sleeve with Open Patella

Neoprene four-way stretch fabric provides uniform support and warmth

Binding and pre-curve design with spandex mesh behind the knee

Double neoprene anterior pad

Washable and shrink resistant

Part No.	Sizes
BKS200	S, M, L, XL, 2XL

BKS100 Series

Ambidextrous Knee Sleeve

Neoprene four-way stretch fabric provides uniform support and warmth

Binding and pre-curve design with spandex mesh behind the knee

Washable and shrink resistant

Part No.	Sizes
BKS100	S, M, L, XL, 2XL



BKP100 Series

Economy Light Duty Knee Pads

Slightly wider and longer for wraparound comfort

Durable 600D polyester fabric cover

15mm closed cell foam padding

Injection plastic button/clip strap connectors provide easy adjustment and secure fit

Washable and shrink resistant

Part No.	Sizes
BKP100	One size fits most



BKP200 Series

Hard Cap Knee Pads

Smooth hard cap attached with nickel plated grommets easily slides over various surfaces

Durable 600D polyester fabric

15mm EVA foam padding

Anti-bacterial treatment

Injection plastic button/clip strap connectors provide easy adjustment and secure fit

Washable and shrink resistant

Part No.	Sizes
BKP200	One size fits most



BKP200NM Series

Non-Marring Rubber Knee Pads

Rubber non-marring cap attached with nickel plated grommets avoid damage or marking to sensitive work areas

Durable 600D polyester fabric

15mm EVA foam padding

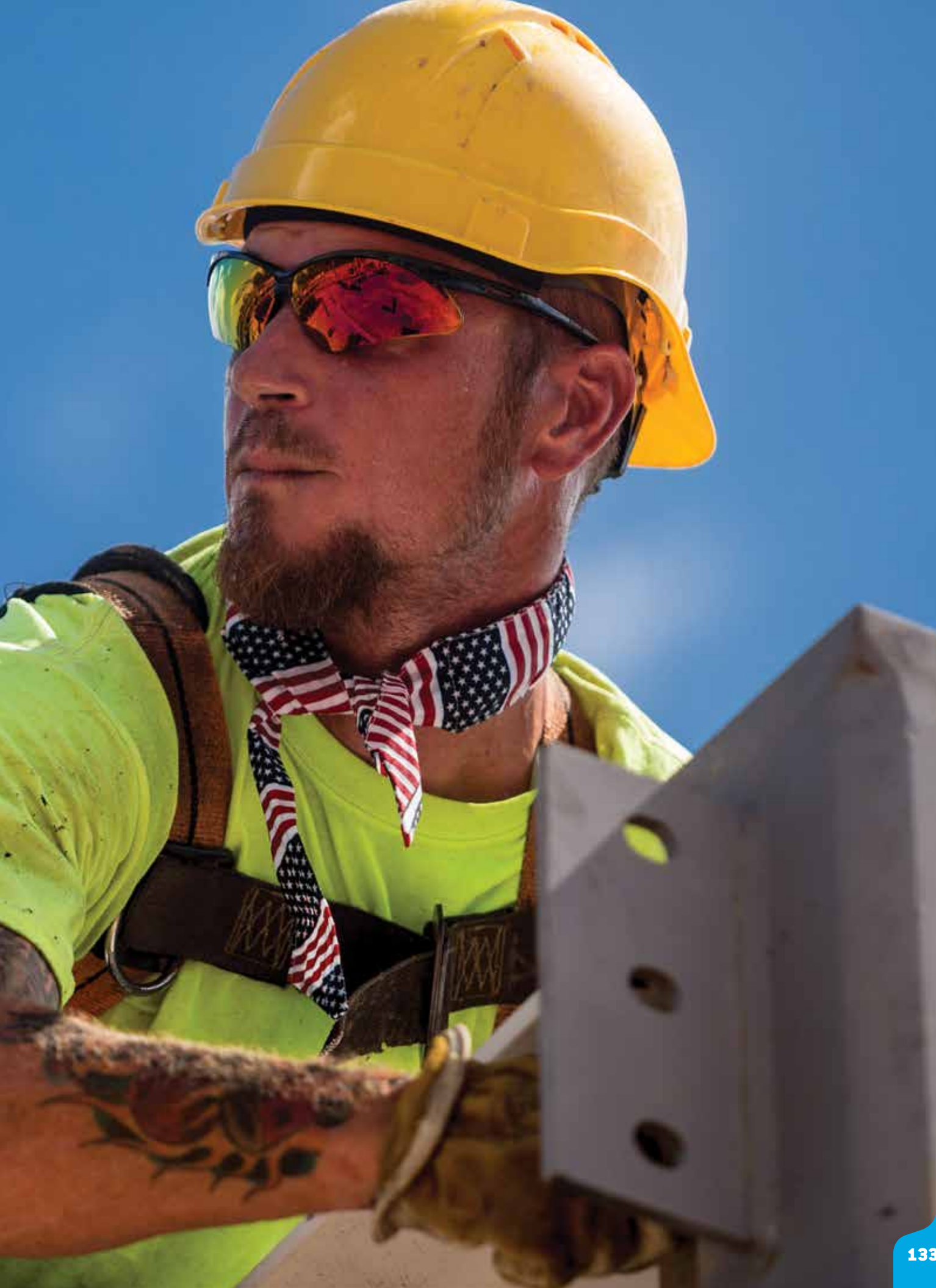
Anti-bacterial treatment

Injection plastic button/clip strap connectors provide easy adjustment and secure fit

Washable and shrink resistant

Part No.	Sizes
BKP200NM	One size fits most







C160 Series

Cooling Towel

Evaporative advanced PVA material holds water without feeling heavy

Anti-microbial treated to help prevent mold build-up and unwanted odors

To activate, simply soak in cool water

Reusable – just reactivate

Machine washable

Dimensions: 26 x 17 inches

Part No.

C160



C260 Series

Cooling Towel Wrap

Evaporative advanced PVA material holds water without feeling heavy

Anti-microbial treated to help prevent mold build-up and unwanted odors

Use as a neck wrap by pulling end of wrap through slit

To activate, simply soak in cool water

Reusable – just reactivate

Machine washable

Dimensions: 26 x 8.5 inches

Part No.

C260



CSK1 Series

Cooling Hard Hat Pad

Made from moisture wicking soft fabric

Traps sweat, keeping it out of your eyes

Fits under hard hats

One size fits all

Part No.

Color

CSK111



Black

CSK1FLG



American Flag



CBD12PK Series

Cooling Bandanas

Sold in dozen quantity only

Each bandana is packaged with a Pyramex hangtag

PVA material provides hours of heat stress relief

Conveniently ties around neck or head

To activate, simply soak in cool water

Reusable – just reactivate

Machine washable

One size fits all

Part No.

Color

CBD12PKBLU



Blue

CBD12PKDC



Digital Camo

CBD12PKLIME



Hi-Vis Lime

CBD12PKSTAR



Stars and Stripes

CBD12PK



Blue, Red Pattern, and Digital Camo

Combo pack includes four of each color option listed in the description above





CPH160 Series

Cooling Hard Hat Pad

Evaporative cooling material provides hours of heat stress relief

Fits on the suspension of a hard hat with hook and loop closures

To activate, soak in cool water

Reusable – just reactivate

One size fits all

Part No.

CPH160



CNS1 Series

Cooling Hard Hat Pad and Neck Shade

Evaporative cooling material keeps you cool for hours

Keeps your head cool and blocks sun from your neck

Made from soft quilted hi-vis material for greater visibility

Fits on the suspension of a hard hat with hook and loop closures

To activate, soak in cool water

Reusable – just reactivate

One size fits all

Part No.	Color
CNS130	Hi-Vis Lime
CNS140	Hi-Vis Orange



CV112 Series

Cooling Vest

Evaporative cooling material keeps you cool for hours

Quilted outer shell is made from soft nylon

Elastic side panels offer a comfortable fit

Durable zippers and generous sizing

To activate, submerge in cool water

Reusable – just reactivate

Machine washable

Part No.	Sizes
CV112	M, L, XL, 2XL



Disposable Particulate Respirators

N95 – 95% efficient respiratory protection in non-oil areas

Proper design – Large coverage providing a comfortable fit for the user

Elastic straps – Ultrasonically welded straps eliminate the need for staples which can irritate the skin

Smooth layers – Soft, smooth outer and inner layer is comfortable on the skin, unlike other makes which can be uncomfortably rough

Adjustable nosepiece – Outer aluminum nosepiece holds shape and provides a proper fit during use

Durable shell – Thick materials prevent collapsing and provide extended use

Foam Strip – Inner foam strip reduces the potential for eyewear fogging

Material – Maintenance-free construction and material offers low breathing resistance

One size fits all



Part No.

RM10 N95 Particulate Respirator
PYRM10C*

*Pyramex retail packaged product



Part No.

RM10V N95 Particulate Respirator with One Way Valve for Easy Exhalation
PYRM10VC*

*Pyramex retail packaged product

Use Against:

NIOSH approved for protection against particulate aerosols free of oils. Pyramex recommends this respirator for use against particulates containing materials such as flour, iron ore, coal and minerals.

Do Not Use Against:

Vapors, paint spray, oil-based aerosols, asbestos and sand blasting

Any contaminant whose concentration is unknown, or immediately dangerous to life

Concentrations of dust and mists which exceed the maximum use of concentration or 10 times contaminant's permissible exposure limit established by OSHA



Part No.

HCW100 100 Individually Packaged Alcohol Free Hygienic Wipes

Disposable Respirators meet the NIOSH standard for N95 particulate respirators. For specific options visit our website or contact your sales representative.



Balaclava

Ultimate protection from cold, wind, dust, and UV rays

Balaclava with a hinge design that can be worn in a variety of ways from ski mask to neck gaiter

Covers face, nose, mouth, and neck while maintaining breathability

Balaclava features mesh breathing panels to increase airflow while minimizing condensation on your eyewear

Fire retardant thermal fleece and mesh material*

Use for skiing, snowboarding, ATVing, hunting, construction, freezer workwear, and warehouse workwear

One size fits all

*Limited FR: The material in this product is composed of treated polyester which will self-extinguish when exposed to flame. Self-extinguishing properties will diminish with washing. This garment does not provide protection against arc flash and should never be used where an arc flash or flash fire hazard is present. For more information visit our website or contact your sales representative.

Part No.

BL111 Black Balaclava

Check out our full line of WINTER WORK WEAR

**Best Seller
HI-VIS**

Class 3 jackets	120
Class 3 hoodies	121
Knit caps	123





S011

15-048

10

1-B 101

15-048
23

The Pyramex Promise

At Pyramex, our promise to our customers is to provide the best possible products, the best possible service, and most importantly, an attitude of making our customers' lives easier on a day-to-day basis. Our values challenge us toward a commitment to truth and to deliver what we promise.





PYRAMEX

Perform At Your Peak™

There's more to see at
PyramexSafety.com



Catalog Part #CATALOGS



Call for Discount Ordering
Phone: 877-999-4847
www.SafetySmartGear.com